



## Colyton Road, SE22

### £475,000

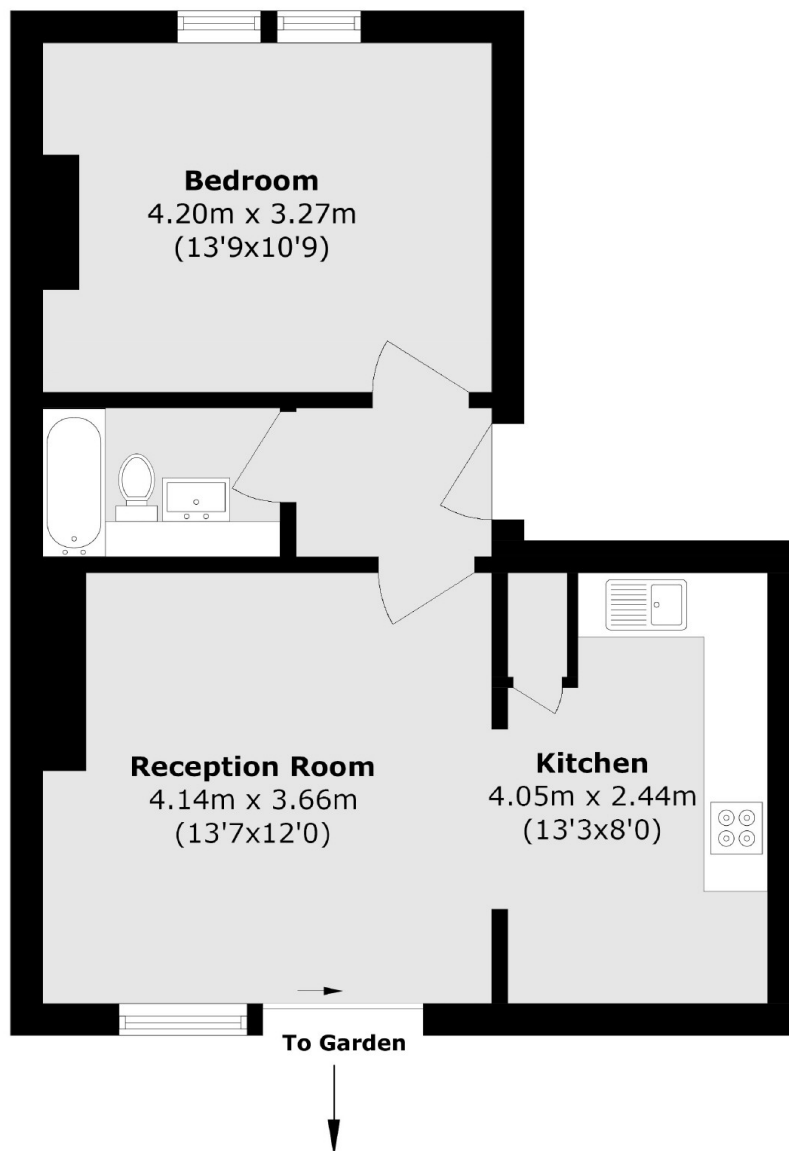
A one-bedroom ground floor garden flat, ideally situated on Colyton Road in the heart of East Dulwich, SE22. This period conversion offers a unique combination of classic character and modern living, providing a comfortable and stylish home, perfect for first-time buyers, young professionals, or those seeking an easy move with no onward chain. The flat boasts a spacious and practical layout, featuring access to a beautiful, south-facing garden.

Colyton Road is a lovely residential road located in East Dulwich with stunning views of the green open spaces of Peckham Rye Park. Local bars and restaurants can be found along Forest Hill Road with transport links provided via multiple bus networks and rail links from Honor Oak and Peckham Rye station serving London Bridge and City Thameslink.

### Features

- South Facing Garden
- No Onward Chain
- New Lease
- One Double Bedroom
- Period Conversion
- Great Location

# Colyton Road, London, SE22



Total area (approx.): 48.1 sq. m (517.7 sq. ft)