



## Peckham Rye, SE22

### £525,000

A delightful one-bedroom garden flat offers a perfect blend of period charm and modern comfort, all while boasting stunning views of the iconic Peckham Rye.

Peckham Rye is located in the heart of East Dulwich moments from an abundance of shopping amenities and excellent restaurants and bars along Lordship Lane. Peckham Rye & East Dulwich stations provides rail links to the city with the open spaces of Peckham Rye Park on your doorstep.

### Features

- Views Of Peckham Rye Park
- Spacious Living Area
- Original Victorian Features
- 570 Square Foot
- Great Location
- South West Facing Garden



## Peckham Rye, SE22

As you step into the property, you are welcomed by the spacious reception room, featuring high ceilings, a striking fireplace, and a beautiful bay window that frames the picturesque views of the lush Peckham Rye.

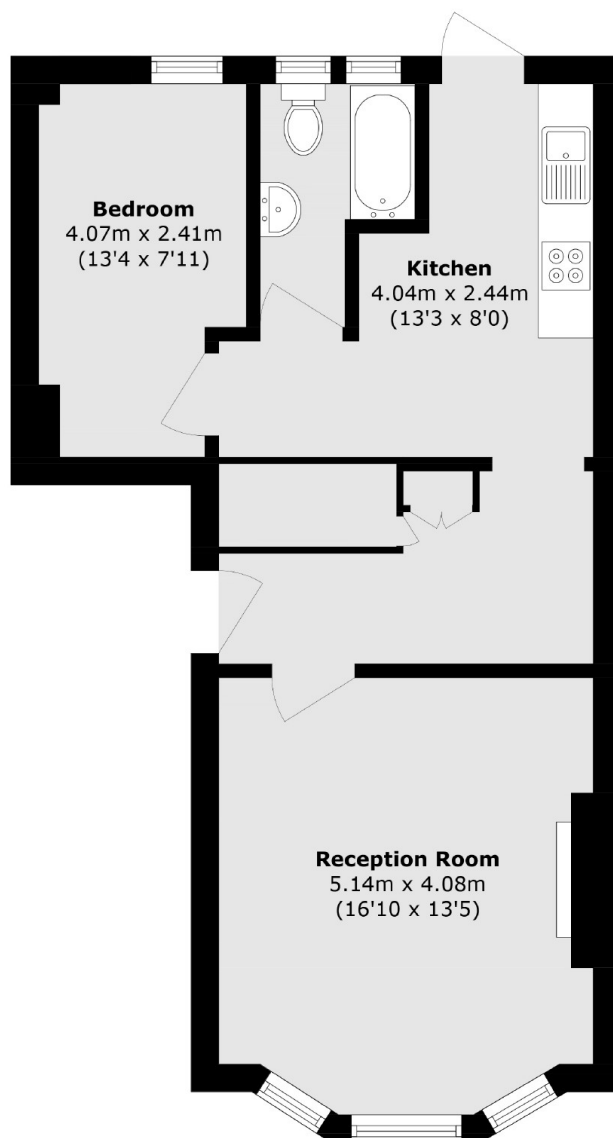
The flat also benefits from a welcoming hallway with convenient built-in storage, ensuring practicality alongside the property's charm.

At the rear of the property, you'll find a generously sized double bedroom, offering a peaceful retreat with a sense of privacy. The bathroom is well-appointed, with modern fixtures and fittings. There is a fully fitted stylish kitchen with space for dining with access out onto an incredible private south-west facing garden, an ideal spot for enjoying sunny afternoons and evening sunsets.





# Peckham Rye, London, SE22



Total area (approx.): 53.0 sq. m (570.4 sq. ft)