



Whateley Road, SE22

£499,999

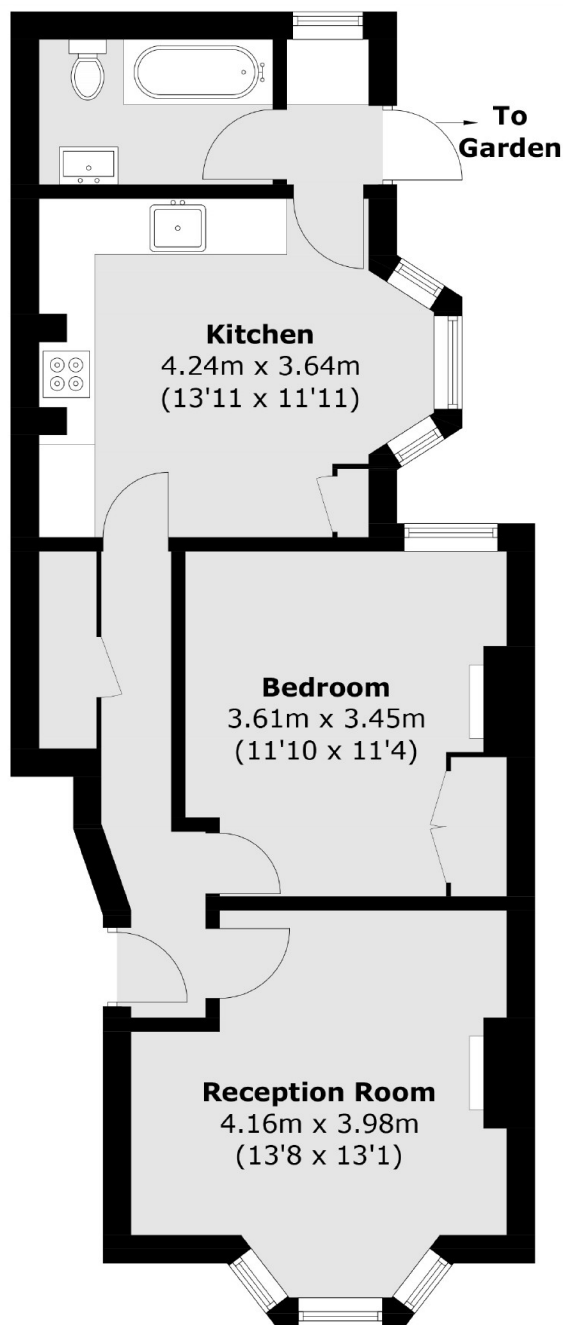
This delightful one-bedroom period conversion ground floor garden flat offers a perfect blend of period charm and modern living. Boasting a spacious living room with high ceilings and an elegant fireplace and a character bay window. The double bedroom features built-in storage, maximizing space and providing a tranquil retreat. The modern, stylish kitchen is fully equipped and offers ample space for dining. Outside, the private garden provides a peaceful outdoor sanctuary.

The location is ultra-convenient being within easy reach of the open spaces of Peckham Rye and close to the shops, bars and restaurants of Lordship Lane. Local transport links are easily found from East Dulwich station with trains to London Bridge.

Features

- Private Garden
- 581 Square Foot
- Period Conversion
- Excellent Location
- Eat In Kitchen
- Great Condition

Whateley Road, London, SE22



Total area (approx.): 54.0 sq. m (581.2 sq. ft)

Dexters

East Dulwich
98 Grove Vale
London
SE22 8DR
Sales
020 8742 4142

Energy Rating: C. We aim to make our particulars both accurate and reliable. However they are not guaranteed; nor do they form part of an offer or contract. If you require clarification on any points then please contact us, especially if you're traveling some distance to view. Please note that appliances and heating systems have not been tested and therefore no warranties can be given as to their good working order.

 **RICS** | Regulated
Estate Agent
and Letting Agent

[dexters.co.uk](https://www.dexters.co.uk)