



**Melbourne Grove, SE22**  
**£1,725,000**

**Dexters**



## Melbourne Grove, SE22

An exquisite, architecturally designed family home with impeccable renovations and spacious living on the sought after Melbourne Grove SE22. This beautiful Victorian home is semi-detached with side access to the garden. It has four bedrooms, multiple living spaces and a fantastic landscaped garden.

Upon entering the house you will find a separate cosy and welcoming reception room space featuring high ceilings, a characterful bay window, and an abundance of natural light. A practical addition to the ground floor is the utility room providing excellent storage and laundry space. The heart of the home is the magnificent open-plan Kitchen Dining Room designed for family living and entertaining. Featuring a stunning cantilever extension, the kitchen and dining area flow seamlessly into the garden, creating the perfect indoor/outdoor space. A high-end kitchen with modern appliances such as a Bora hob and Quooker taps and underfloor heating throughout the downstairs. Step outside to a beautifully landscaped garden with a home office, complete with its own kitchen and W.C offers an excellent space for remote work. On the first floor is the principle bedroom featuring built-in storage and a striking exposed brick feature wall. Another flexible room currently used as a home gym, offering endless possibilities for use as a study, playroom, or additional bedroom. The family bathroom is a modern, stylish space with high-quality finishes. The loft has been thoughtfully extended creating two further bedrooms and another bathroom.

### Features

- Four Bedrooms
- Freehold House
- Excellent Location
- Open Plan Living
- Home Office
- Off Street Parking



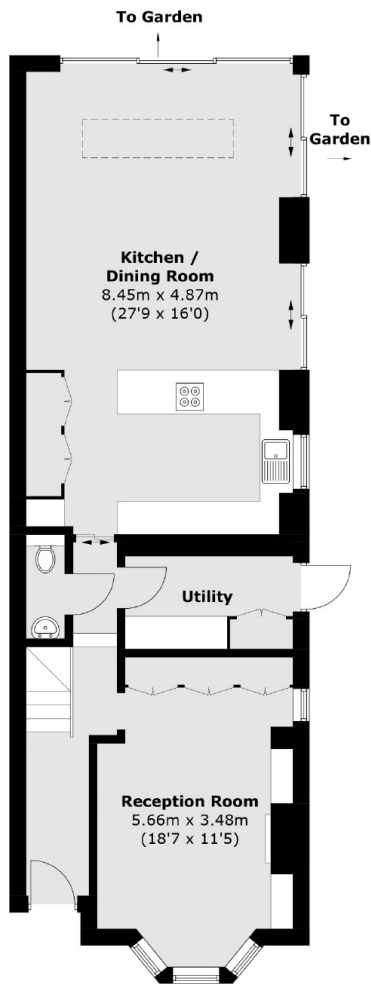




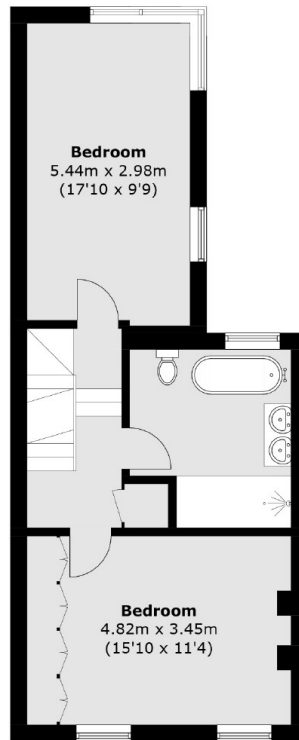




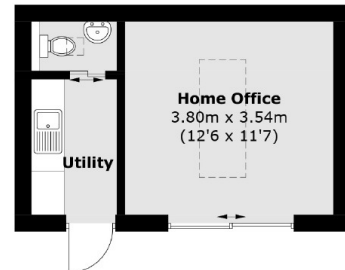
# Melbourne Grove, London, SE22



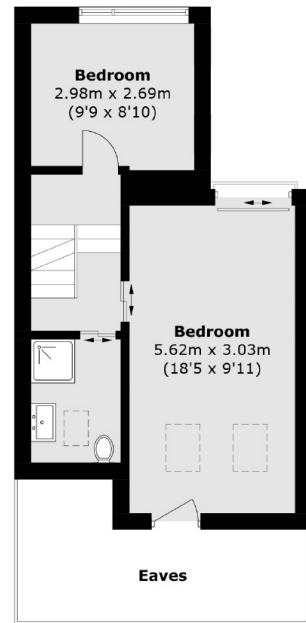
**Ground Floor**



**First Floor**



**Home Office**



**Second Floor**

Total area (approx.): 164.6 sq. m (1,771.8 sq. ft)  
(Excluding Eaves)  
Home Office (approx.): 20.0 sq. m (215.2 sq. ft)