



## Friern Road, SE22

£595,000

This large, cleverly-designed, two-double-bedroom garden flat has a superb layout measuring over 680 square feet. It features fantastic living space, a delightful garden and occupies the whole ground floor of a converted and extended Victorian house.

Located within walking distance of Lordship Lane, Dulwich Park and Peckham Rye Park. The property is within easy reach of East Dulwich and Peckham Rye stations with overground links to London Bridge, Victoria & Blackfriars.

### Features

- Excellent Condition
- Two Double Bedrooms
- Stylish Kitchen And Bathroom
- Rear Extension
- Private Garden
- Share Of Freehold



## Friern Road, SE22

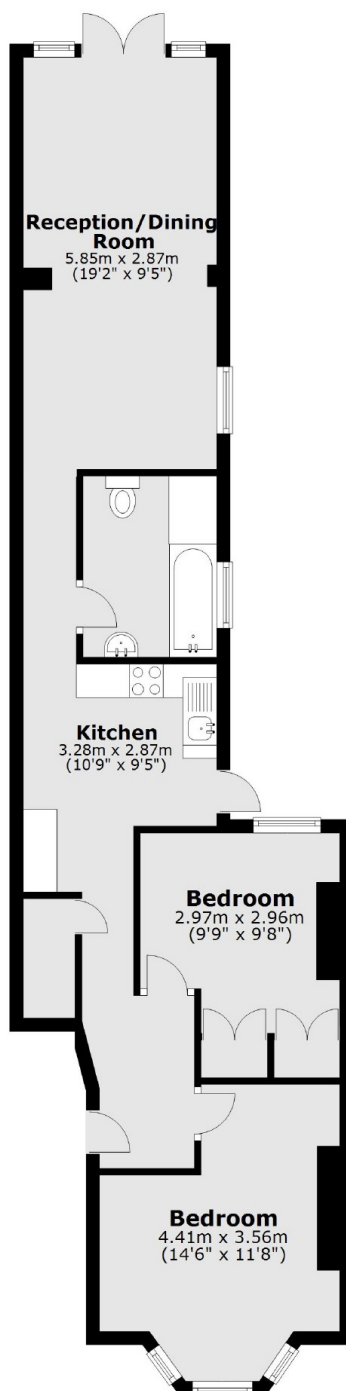
Immaculately presented throughout there are two good size bedrooms to the front of the property, one with a feature fireplace and both with newly fitted wardrobes. The rear of the property has been the subject of an extension project in recent years and now has a large dual aspect reception / dining area, modern kitchen and a stylish bathroom. Crittle style doors open onto a large and landscaped rear garden which is secluded and features a paved patio area and large lawn.





# Friern Road, London, SE22

## Ground Floor



Total area: approx. 63.8 sq. metres (687.1 sq. feet)

# Dexters

East Dulwich  
98 Grove Vale  
London  
SE22 8DR  
Sales  
020 8742 4142

Energy Rating: . We aim to make our particulars both accurate and reliable. However they are not guaranteed; nor do they form part of an offer or contract. If you require clarification on any points then please contact us, especially if you're traveling some distance to view. Please note that appliances and heating systems have not been tested and therefore no warranties can be given as to their good working order.

 **RICS** | Regulated  
Estate Agent  
and Letting Agent

[dexters.co.uk](https://www.dexters.co.uk)