



Marmora Road, SE22

£775,000

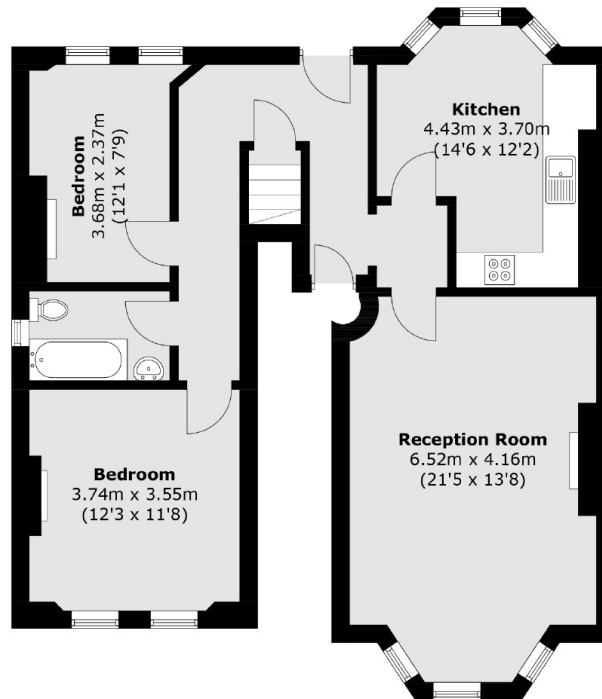
A Superb Double Fronted Detached property situated on a wide quiet residential road in East Dulwich. The property is currently set out as two separate dwellings but under one title. This offers the buyer flexibility with how they use the space. Marmora road is an ideal location with access to Lordship Lane in walking distance. The property has a wonderful warm feel throughout and has many of the original features intact. Share of freehold with a 999 year lease and off street parking.

Marmora road is quiet residential road located in the heart of East Dulwich moments from the green open spaces of Peckham Rye Park, local bars and restaurants can be found along Forest Hill Road with Honor Oak Park your closest station serving London Bridge.

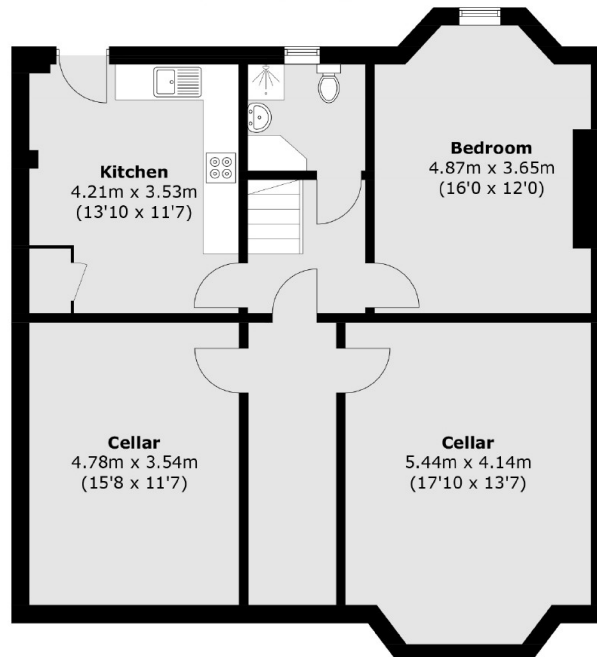
Features

- Large Private Garden
- 999 Year Lease
- Share of Freehold
- Double Fronted
- Chain Free
- Off Street Parking

Marmora Road, London, SE22



Ground Floor



Lower Ground Floor

Total area (approx.): 170.4 sq. m (1,834.1 sq. ft)