



Hunters Meadow, SE19

£275,000

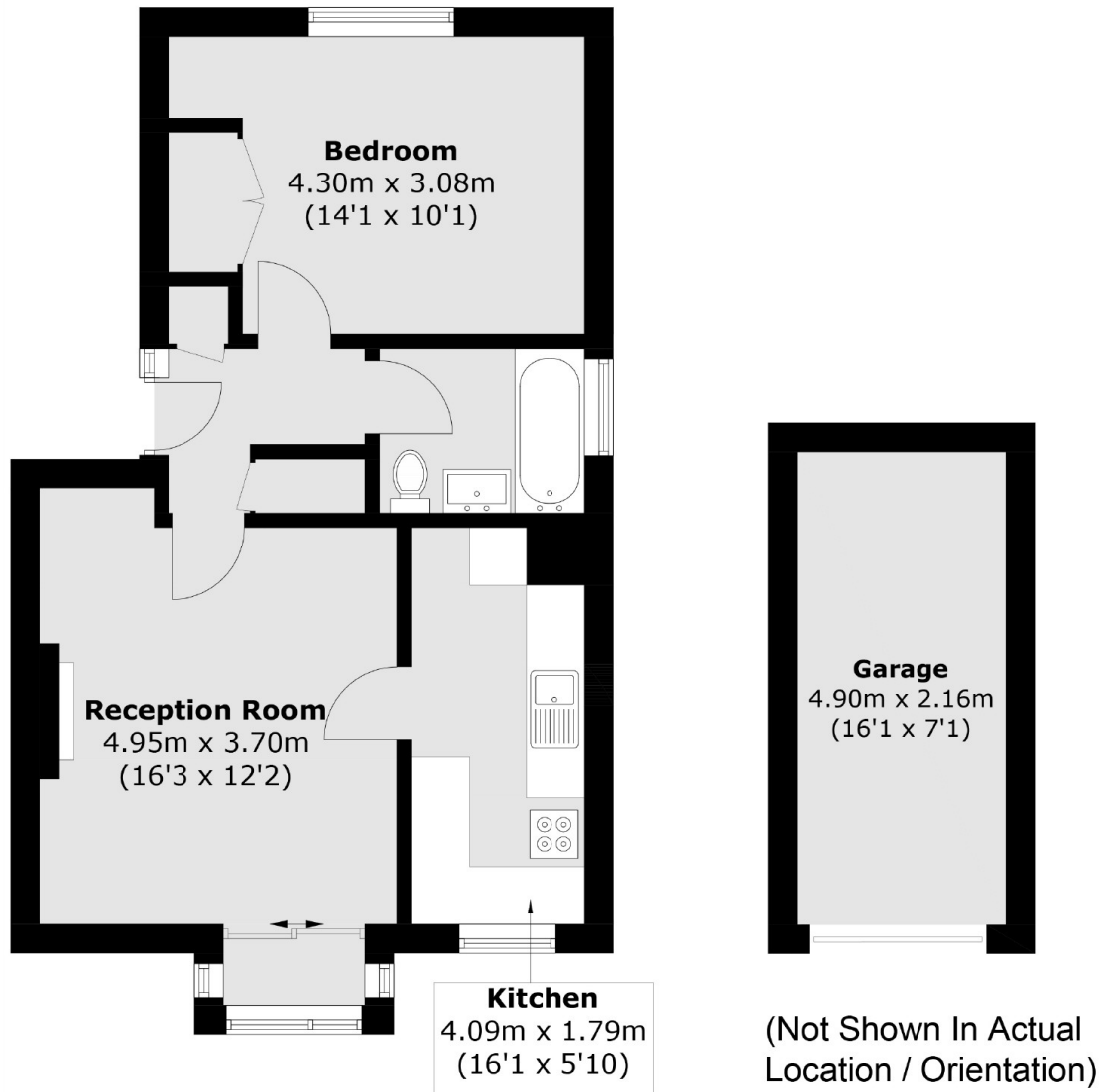
Located within a small private development this purpose built apartment is sold with a recently extended lease and no onward chain. Requiring some updating, it offers a good-size double bedroom, bright reception with plenty of space for dining, fitted kitchen and bathroom/WC. With the added benefit of a garage en bloc it presents the perfect step on to the property ladder.

Hunters Meadow is a sought after development situated opposite Long Meadow Park and perfectly placed for many of the areas amenities, including independent restaurants, local shops and bars. The nearest train station is Gipsy Hill with services to Victoria, London Bridge and Crystal Palace. Sydenham Hill station is also within reach with frequent trains to Victoria.

Features

- Naturally Bright
- Over 500 Sq Ft
- Convenient Location
- No Onward Chain
- Garage En Bloc
- Extended Lease

Hunters Meadow, London, SE19



Total area (approx.): 46.9 sq. m (504.8 sq. ft)
Garage : 10.6 sq. m (114.1 sq. ft)

Dexters

East Dulwich
98 Grove Vale
London
SE22 8DR
Sales
020 8742 4142

Energy Rating: . We aim to make our particulars both accurate and reliable. However they are not guaranteed; nor do they form part of an offer or contract. If you require clarification on any points then please contact us, especially if you're traveling some distance to view. Please note that appliances and heating systems have not been tested and therefore no warranties can be given as to their good working order.

 **RICS** | Regulated
Estate Agent
and Letting Agent

dexters.co.uk