



Peckham Rye, SE22

£600,000

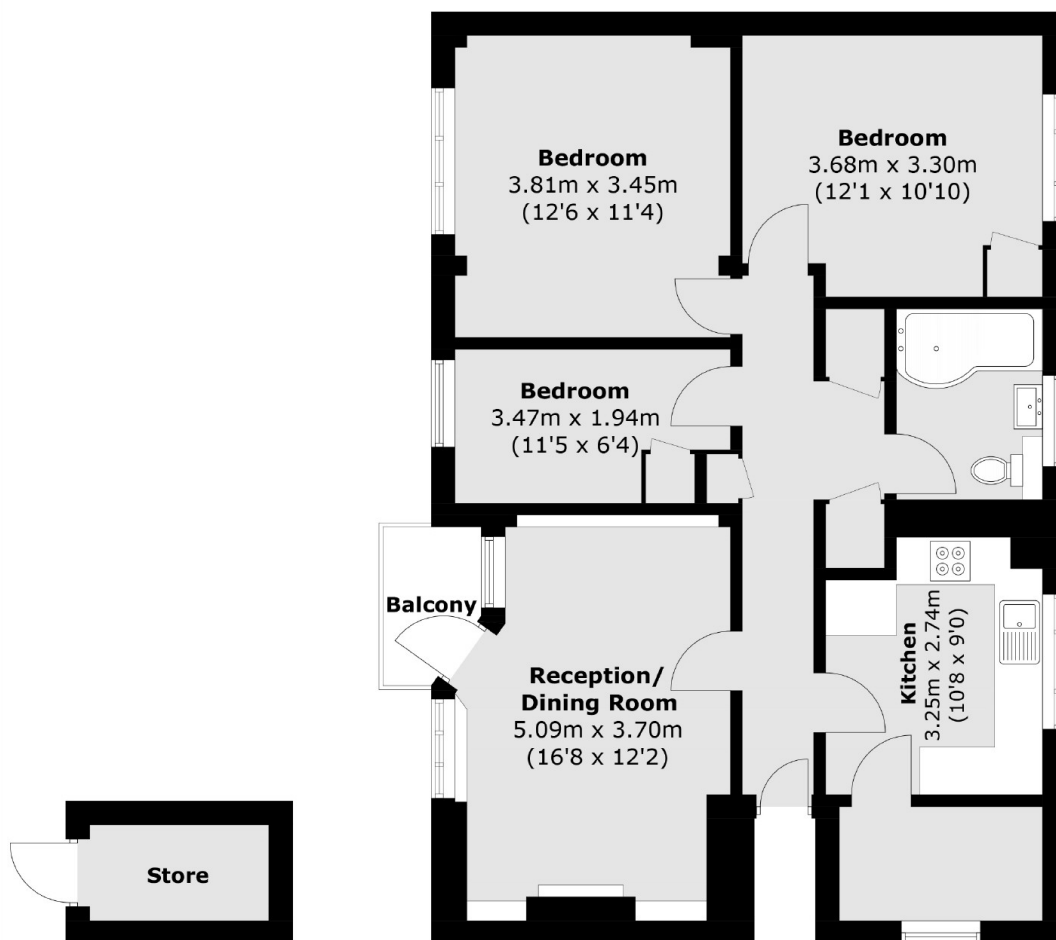
A fantastic opportunity to purchase this lovely three bedroom apartment, situated in a well maintained mid century brick built in a desirable location on the edge of Peckham Rye Park. This sizeable bright apartment is positioned on the second floor, is offered in very good condition throughout, comprising of a generous reception room with wood style flooring and working gas fire, three good size bedrooms, a separate eat-in kitchen and a modern bathroom. The property also benefits from high ceilings, an external storage facility, residents parking, and a balcony with views over the communal gardens.

Peckham Rye Park & Common is on your door step with Nunhead and East Dulwich's town centres both within easy reach providing an array of shops restaurants and bars. Frequent rail links into Zone One can be found from Nunhead and Peckham Rye Stations.

Features

- Share Of Freehold
- Three Double Bedrooms
- Private Parking
- Close To Transport
- Views Over Communal Gardens
- Great Storage

Peckham Rye, London, SE22



Ground Floor

Second Floor

Total area (approx.): 82.2 sq. m (884.8 sq. ft)

Balcony area : 2.2 sq. m (23.7 sq. ft)