



Ulverscroft Road, SE22

£900,000

Nestled in the heart of East Dulwich, this delightful three-bedroom Victorian terraced house offers an exciting opportunity for renovation, presented to the market with no onward chain. With a blend of classic character and immense potential, this home is ideal for those looking to create a stylish family haven in a sought-after location.

Ulverscroft Road is perfectly located between Dulwich Park, Peckham Rye Park and amenities of Lordship Lane with its bars, cafes, restaurants and independent shops. There are excellent transport links from East Dulwich station and Peckham Rye station and Ulverscroft Road is in the catchment areas of a number of the fantastic East Dulwich schools.

Features

- Victorian Family Home
- No Onward Chain
- Potential To Extend (STPP)
- Three Bedrooms
- East Facing Garden
- Great Location

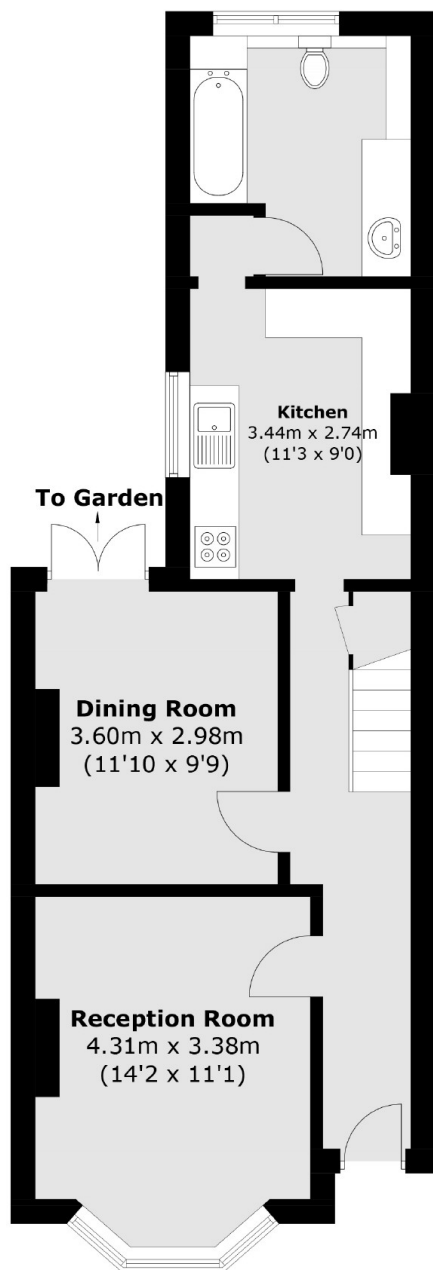


Ulverscroft Road, SE22

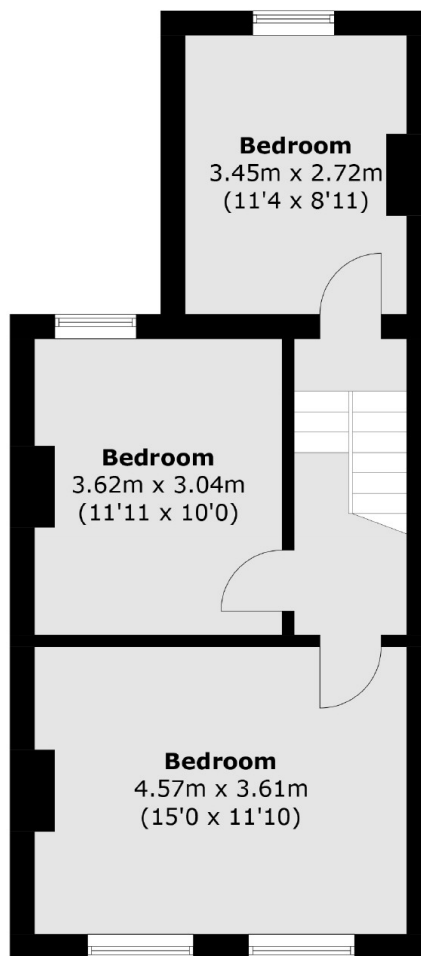
Upon entering, you are welcomed into a spacious reception room, offering a perfect space for relaxing or entertaining. The separate dining room, with direct access to the garden, presents an excellent setting for family meals and gatherings. A functional kitchen is located towards the rear of the property as well as the family bathroom. With a side return offering potential for extension, the ground floor holds fantastic scope for enhancing the living space. The first floor is home to the principle bedroom, a generously sized room with ample space for built-in storage. There are two additional double bedrooms, each offering good proportions and natural light. The property also benefits from significant potential to extend into the loft, providing the opportunity to further develop the living area and add value.



Ulverscroft Road, London, SE22



Ground Floor



First Floor

Approx Internal Area: 97.1 sq. m (1,045.1 sq. ft)