



## Lordship Lane, SE22

### £325,000

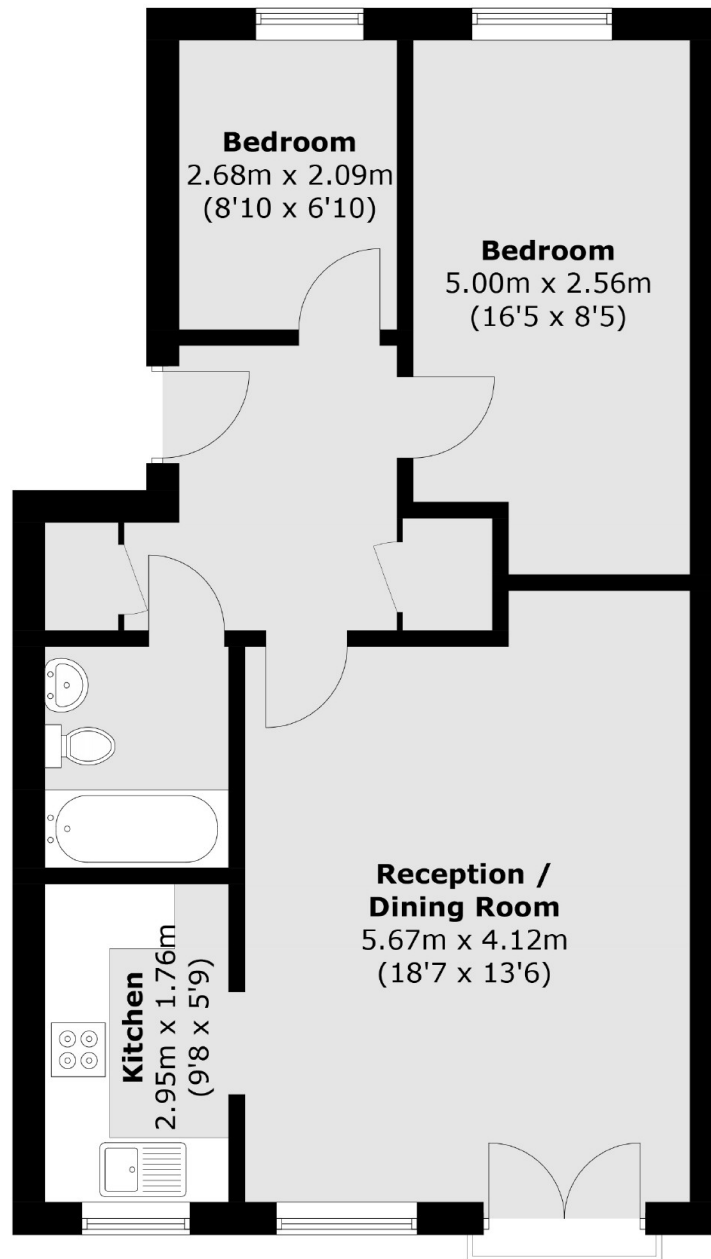
Located within a small private development this modern apartment ticks all the boxes. Well presented through out it offers a bright reception with plenty of space for dining, stylish kitchen and two bedrooms served by a stylish bathroom/WC. Offered chain free, it presents the perfect step on to the property ladder.

Dukes Court is a modern development situated along Lordship Lane and perfectly placed for many of the areas amenities, including independent restaurants, local shops and bars. The green open spaces of Dulwich Park are close at hand as are frequent rail connections from Forest Hill (Overground) and West Dulwich stations.

### Features

- Modern Development
- Naturally Bright
- Modern Fittings
- Two Bedrooms
- Convenient Location
- No Onward Chain

# Lordship Lane, London, SE22



Total area (approx.): 59.1 sq. m (636.1 sq. ft)

## Dexters

East Dulwich  
98 Grove Vale  
London  
SE22 8DR  
Sales  
020 8742 4142

Energy Rating: C. We aim to make our particulars both accurate and reliable. However they are not guaranteed; nor do they form part of an offer or contract. If you require clarification on any points then please contact us, especially if you're traveling some distance to view. Please note that appliances and heating systems have not been tested and therefore no warranties can be given as to their good working order.

 **RICS** | Regulated  
Estate Agent  
and Letting Agent

[dexters.co.uk](https://www.dexters.co.uk)