



Lordship Lane, SE22

£350,000

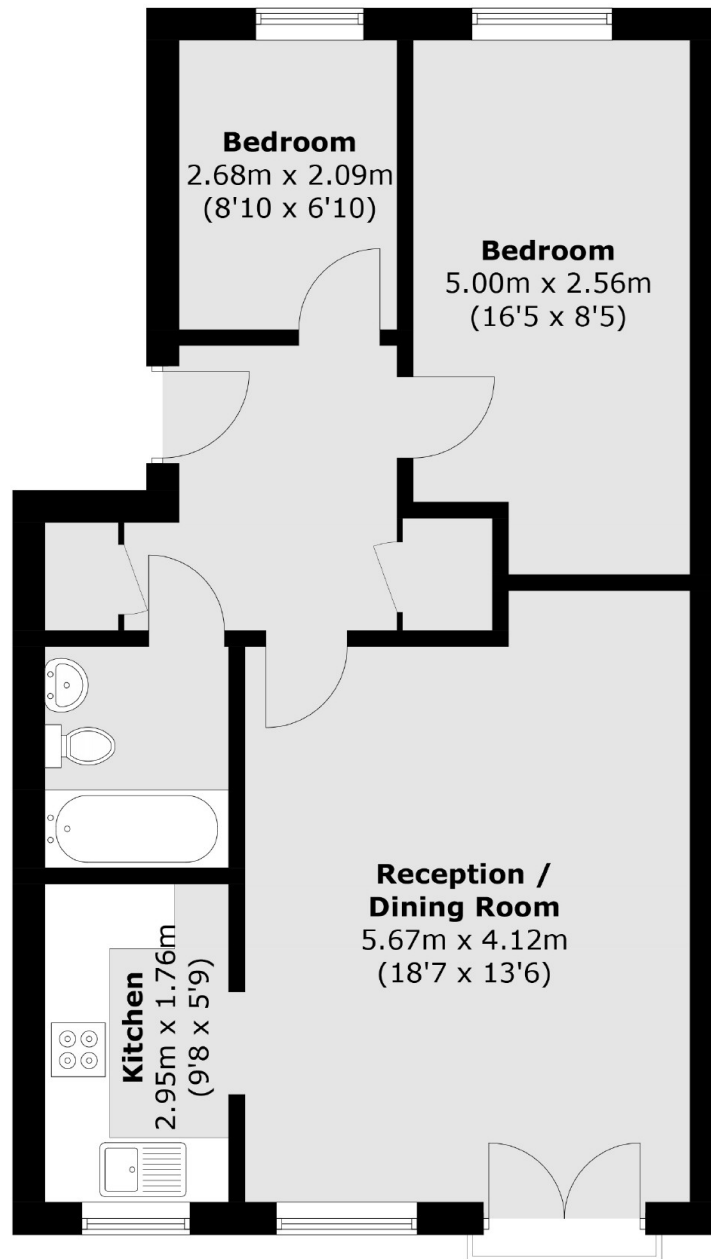
Located within a small private development this modern apartment ticks all the boxes. Well presented through out it offers a bright reception with plenty of space for dining, stylish kitchen and two bedrooms served by a stylish bathroom/WC. Offered chain free, it presents the perfect step on to the property ladder.

Dukes Court is a modern development situated along Lordship Lane and perfectly placed for many of the areas amenities, including independent restaurants, local shops and bars. The green open spaces of Dulwich Park are close at hand as are frequent rail connections from Forest Hill (Overground) and West Dulwich stations.

Features

- Modern Development
- Naturally Bright
- Modern Fittings
- Two Bedrooms
- Convenient Location
- No Onward Chain

Lordship Lane, London, SE22



Total area (approx.): 59.1 sq. m (636.1 sq. ft)