



Underhill Road, SE22

£710,000

At over 1300 sq/ft and spanning across the entire ground floor of this imposing Victorian house, is this gorgeous two double bedroom garden flat, which is offered with a share of the freehold.

Forest Hill provides London Overground services to Clapham Junction and London Bridge, with East Dulwich station and Peckham Rye station easily accessible by bus. Lordship Lane provides an abundance of independent shops and restaurants with the open spaces of Dulwich Park close by.

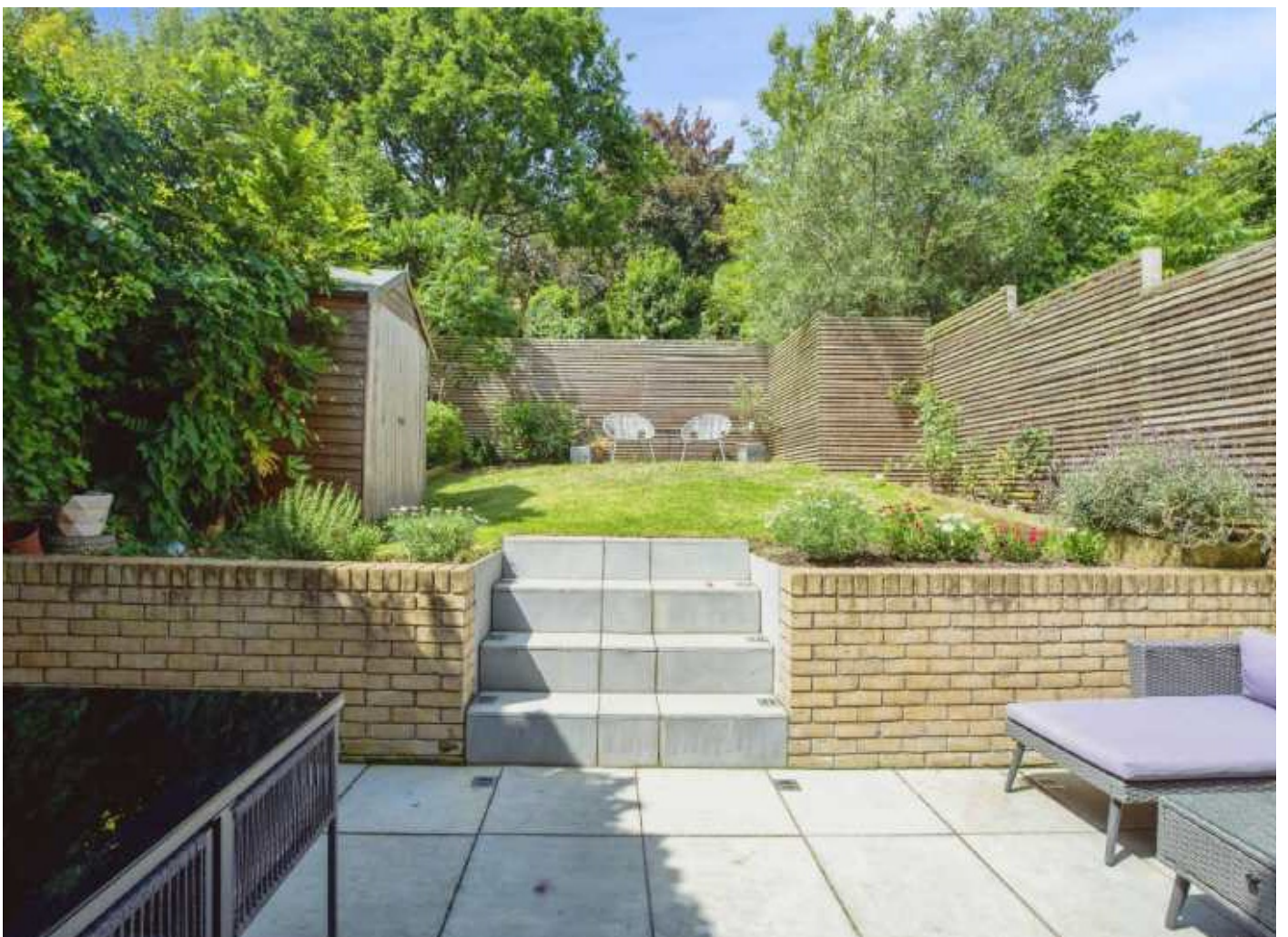
Features

- Ground Floor
- Victorian Conversion
- Own Entrance
- Two Double Bedrooms
- Private South Facing Garden
- Share Of Freehold

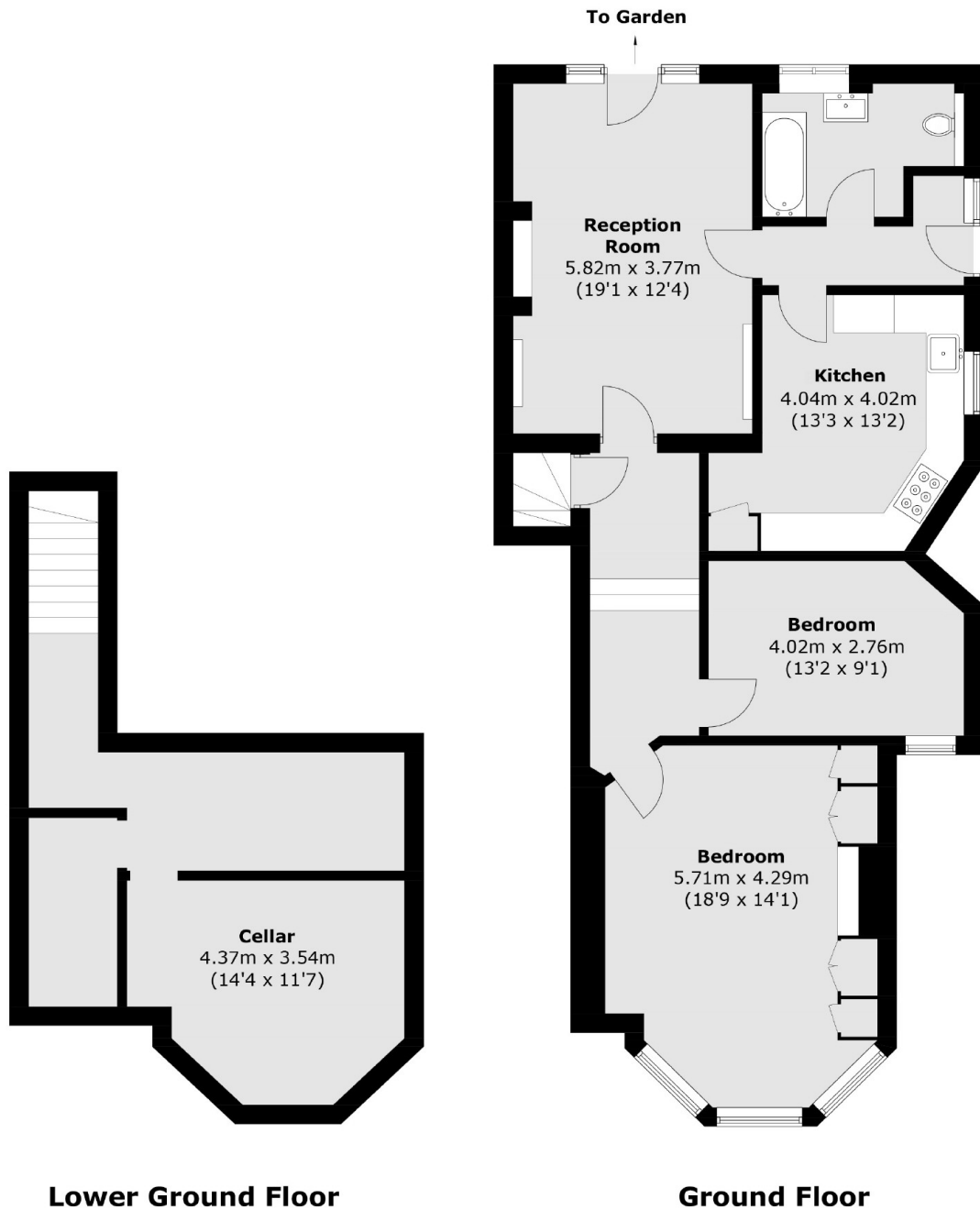


Underhill Road, SE22

The property is accessed via a secure side gate, with its own entrance. Wider than the average Victorian house and oozing with character and period features, with beautiful high ceilings and original wooden floors. The kitchen can be accessed from either corridor and includes a range cooker and generous storage cupboard space. The living room is spacious, with room for a large dining table, and has french doors that lead out onto a well kept south facing garden, which has been fully remodelled and landscaped by the current owners. There are two good size double bedrooms, the master being exceptionally large, with floor to ceiling built in wardrobes, and a stunning bay window, which floods the room with lots of natural light. There is also a generous sized family bathroom, with roll top bath. The property also boasts an impressive cellar, fantastic for storage and can be used as a utility room.



Underhill Road, London, SE22



Total area (approx.): 124.1 sq. m (1,335.7 sq. ft)