



Lordship Lane, SE22

£299,950

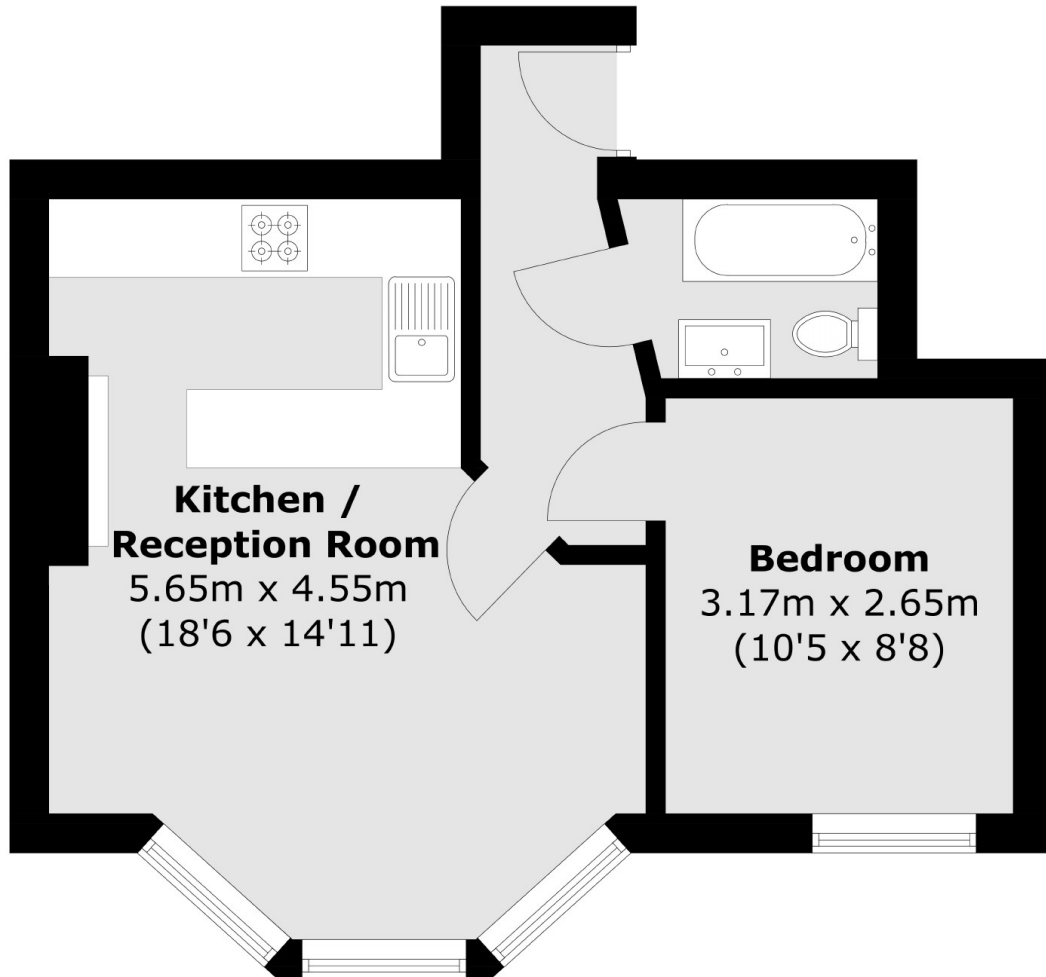
An Edwardian period conversion one double bedroom first floor flat with open plan living, high ceilings and being sold with no onward chain. There is a shared garden at the rear of the building and the flat comes with a healthy lease. This flat is the perfect first time buy, downsize or pied-à-terre.

Lordship Lane is perfectly placed for many of the areas amenities, including independent restaurants, local shops and bars. The green open spaces of Dulwich Park are close at hand as are frequent rail connections from Forest Hill (Overground) and West Dulwich stations.

Features

- Edwardian Conversion
- One Double Bedroom
- Shared Garden
- Private Driveway
- Open Plan Living
- Chain Free

Lordship Lane, London, SE22



Total area (approx.): 36.4 sq. m (391.8 sq. ft)

Dexters

East Dulwich
98 Grove Vale
London
SE22 8DR
Sales
020 8742 4142

Energy Rating: C. We aim to make our particulars both accurate and reliable. However they are not guaranteed; nor do they form part of an offer or contract. If you require clarification on any points then please contact us, especially if you're traveling some distance to view. Please note that appliances and heating systems have not been tested and therefore no warranties can be given as to their good working order.

 **RICS** | Regulated
Estate Agent
and Letting Agent

dexters.co.uk