



## Grove Vale, SE22

£370,000

Fully renovated to a high standard is this well designed one bedroom first floor flat, located in the heart of East Dulwich and moments away from the amenities of Lordship Lane.

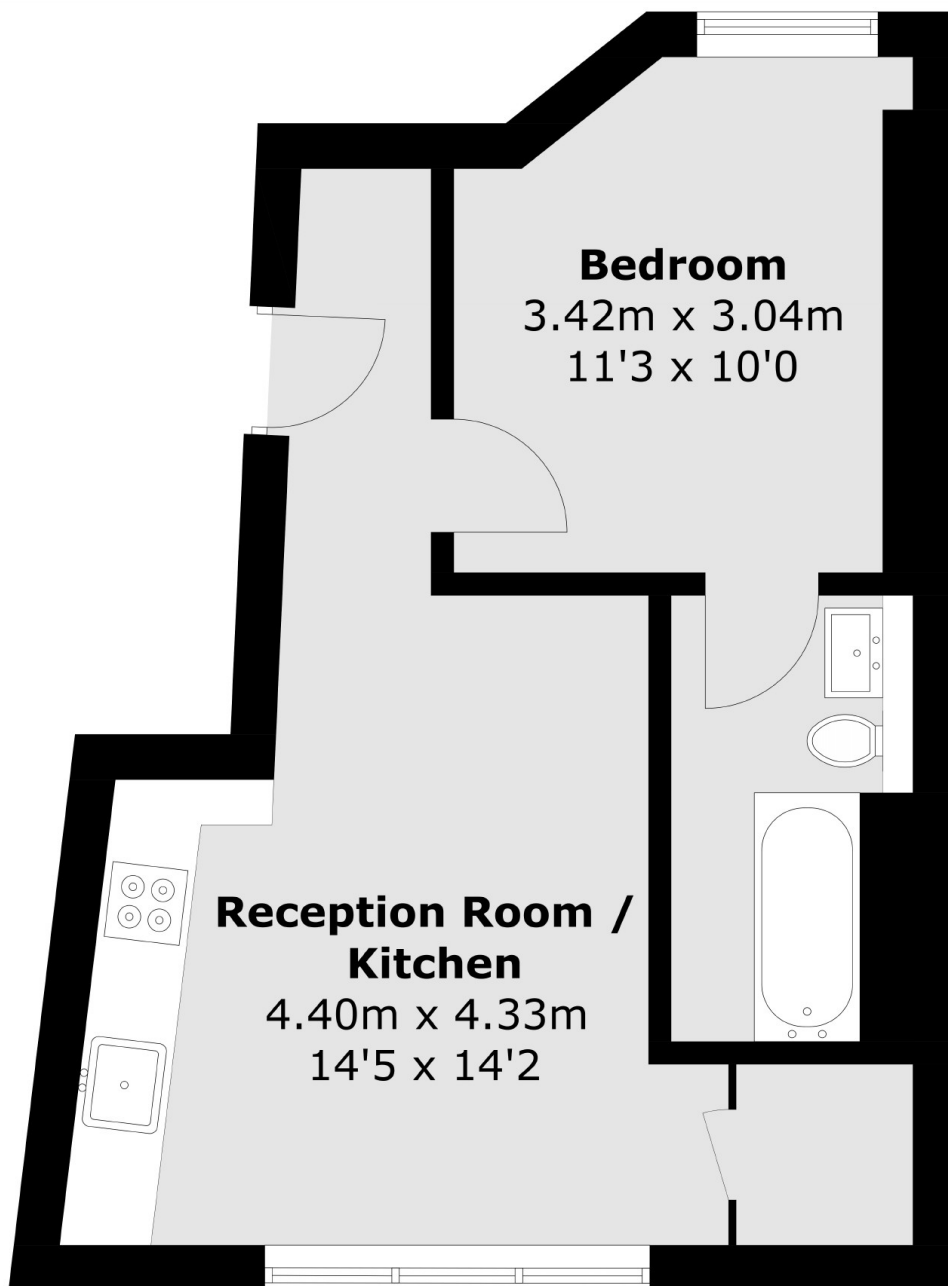
The property comprises an open plan kitchen / living room with fully fitted high spec modern kitchen, good size double bedroom with en-suite bathroom. An ideal purchase for a first time buyer.

Located within close proximity to East Dulwich station which offers rail links to the City via London Bridge. The shops, bars and restaurants of Lordship Lane are on your doorstep, as well being walking distance from the open spaces of Dulwich Park and Peckham Rye.

### Features

- First Floor
- One Double Bedroom
- Fully Renovated
- Long Lease
- Fantastic Location
- Close To Transport Links

# Grove Vale, London, SE22



Total area (approx.): 35.3 sq. m (379.9 sq. ft)

## Dexters

East Dulwich  
98 Grove Vale  
London  
SE22 8DR  
Sales  
020 8742 4142

Energy Rating: D. We aim to make our particulars both accurate and reliable. However they are not guaranteed; nor do they form part of an offer or contract. If you require clarification on any points then please contact us, especially if you're traveling some distance to view. Please note that appliances and heating systems have not been tested and therefore no warranties can be given as to their good working order.

 **RICS** | Regulated  
Estate Agent  
and Letting Agent

[dexters.co.uk](https://www.dexters.co.uk)