



Landells Road, SE22

£1,200,000

Dexters



Landells Road, SE22

This superb Victorian terraced house, moments from fashionable Lordship Lane, has been refurbished and updated throughout. It now offers an extended kitchen, double reception room, five bedrooms and two bathrooms.

Presented in immaculate condition the décor is both neutral and stylish. The dual aspect kitchen has been extended with contemporary stylish doors that open onto the rear garden, which is largely paved with raised borders and garden room. There are a range of bespoke base and wall units, built-in appliances, and useful downstairs/WC. The double reception room receives plenty of natural light with fireplace, alcove cupboards and stripped wooden floors.

Upstairs the large front and rear loft spaces have both been well converted to add considerable extra square footage and increase the accommodation to five good-size bedrooms served by two bathrooms including a large family bathroom that has double basins and stylish freestanding bath.

Landells Road provides a fantastic residential location perfectly placed for Lordship Lane with its array of independent shops, bars, and restaurants. The green open spaces can be found at either Dulwich Park or Peckham Rye Park, with frequent rail links provided via East Dulwich for London Bridge.

Features

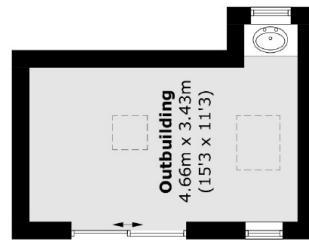
- Extended Victorian Terrace
- Naturally Bright
- Five Bedrooms
- Two Bathrooms
- Landscaped Garden
- Sought After Street



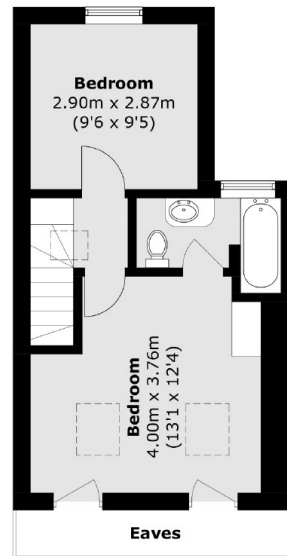




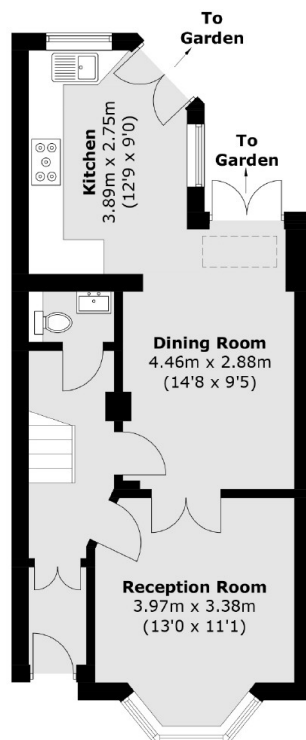
Landells Road, London, SE22



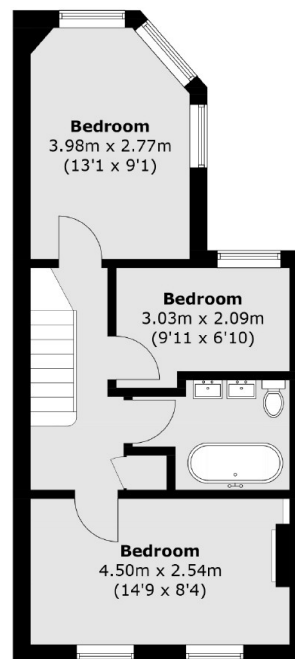
(Not Shown In Actual
Location / Orientation)



Second Floor



Ground Floor



First Floor

Total area (approx.): 116.2 sq. m (1,250.8 sq. ft)
(Excluding Eaves)

Outbuilding: 13.5 sq. m (145.3 sq. ft)