



Whateley Road, SE22

£1,100,000

A beautiful family home with an outstanding finish throughout, this gorgeous, Victorian house oozes contemporary style and represents an exceptional, turn-key opportunity in a sought after East Dulwich location.

The location is ultra-convenient being within easy reach of the open spaces of Peckham Rye and close to the shops, bars and restaurants of Lordship Lane. The property is also well located for excellent schools in the area. Local transport links are easily found from East Dulwich station with trains to London Bridge and Peckham Rye providing links to Canada Water.

Features

- Victorian Terrace
- Excellent Condition
- Sought After Location
- Four bedrooms
- Two Bathrooms
- Open Plan

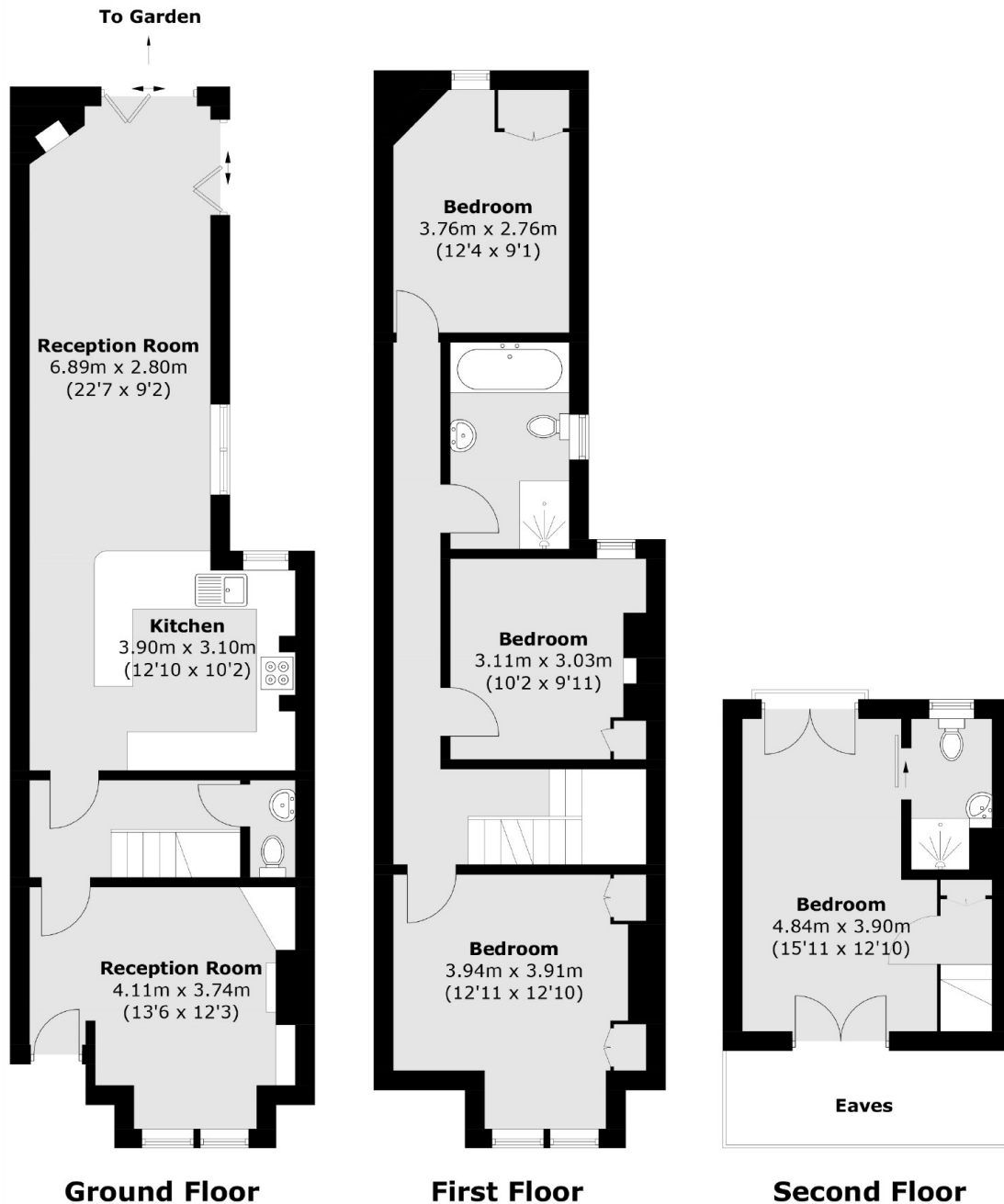


Whateley Road, SE22

The property offers a well proportioned downstairs layout with two entertaining spaces and a separate traditional yet contemporary living room welcomes you into the home. Period features such as a beautiful fireplace add to the charm. Walking through into the open plan kitchen and secondary living area you are hit with ample light enhancing the space further. The kitchen has been well finished in a tasteful modern decor. On the first floor are three double bedrooms all served by a stylish family bathroom. On the second floor the well-designed loft conversion, complete with an en suite and a Juliet balcony, is perfect for a guest room or home office.



Whateley Road, London, SE22



Total area (approx.): 124.9 sq. m (1,344.4 sq. ft)
(Excluding Eaves)