



Dulwich Common, SE21

£1,850,000

Dexters



Dulwich Common, SE21

A wonderful detached six bedroom house arranged over three floors with over 2,200 square foot of family living space. The house is excellently proportioned, has character features and an incredible 100 foot south facing garden.

Set back from the road, the property's deep front driveway provides secure off-street parking. The welcoming spacious hallway leads into the front reception room with a bay fronted window and character gas burner. The ground floor is completed by an open plan kitchen reception which is the real heartbeat of this home. The fully fitted stylish modern kitchen has plenty of worktop space, a wine fridge and a large window with views of the beautiful garden bringing natural light into the space. The reception off the kitchen is the perfect area for socialising and relaxing as well as family dining. The sunny south facing garden has a magnificent lawn with mature trees and shrubs as well as a detached garage providing extra storage space. The first floor has two equal sized generous double bedrooms with bay windows and expertly crafted built in wardrobes. There are two more double bedrooms on this floor serviced by a family bathroom and separate W.C. The house has been extended providing two more impressive bedrooms on the top floor, with views over the wonderful green spaces of Dulwich, and a further family bathroom.

Features

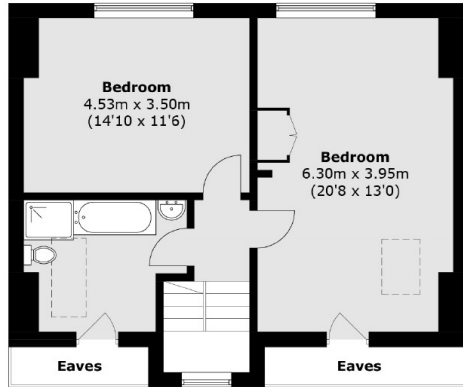
- Detached House
- Six Bedrooms
- 100 Foot South Facing Garden
- Open Plan Kitchen/Reception
- 2,238 Square Foot
- Garage



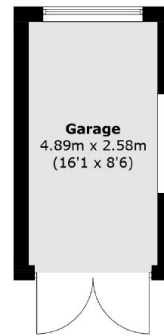




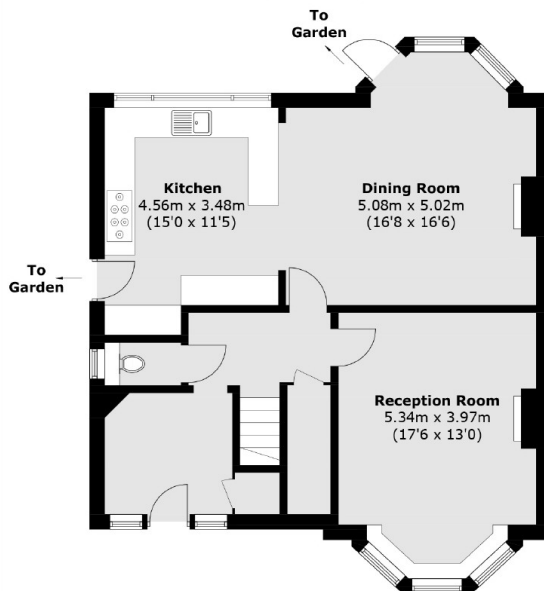
Dulwich Common, London, SE21



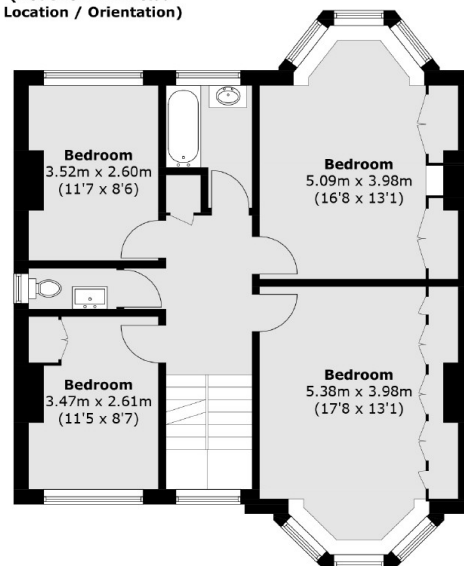
Second Floor



(Not Shown In Actual
Location / Orientation)



Ground Floor



First Floor

Total area (approx.): 208.0 sq. m (2,238.9 sq. ft)
(Excluding Eaves)
Garage: 13.0 sq. m (139.9 sq. ft)