



## Oakhurst Grove, SE22

£750,000

Boasting over 1000 sq/ft of internal space, is this superb duplex penthouse apartment, offered in excellent condition and with a long lease.

Oakhurst Road is a quiet tree-lined street perfectly placed for the open spaces of Peckham Rye Park and Goose Green. Lordship Lane is within easy reach providing an array of shops, restaurants and bars whilst rail links into Zone One can be found from East Dulwich and Peckham Rye stations.

### Features

- Duplex Penthouse Apartment
- Period Conversion
- Open Plan Living
- Private Terrace
- Two Bathrooms
- Over 1000 Sq/Ft

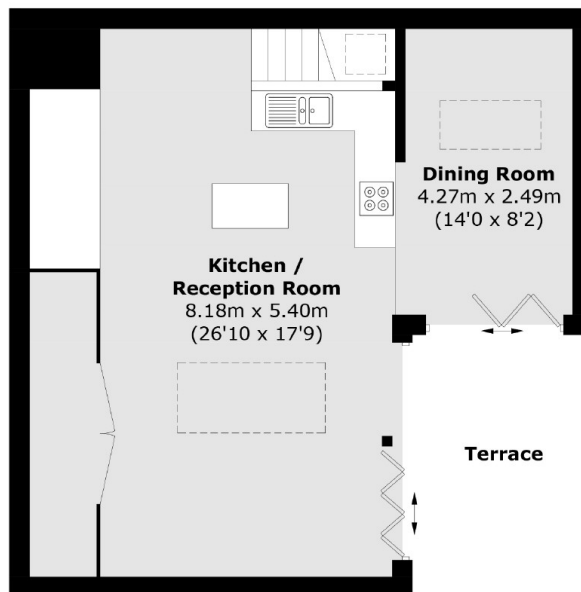


## Oakhurst Grove, SE22

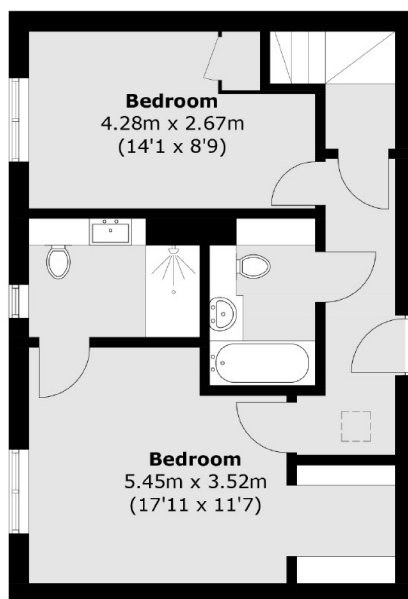
The property is split across the 2nd and 3rd floor of this imposing Victorian building which been completely reconfigured and renovated to a very high standard. Downstairs includes a large master bedroom, with walk-in-wardrobe and ensuite bathroom. There is also another good size double bedroom and family bathroom. Venturing upstairs you truly get the wow factor, with a fantastic open plan living / kitchen / dining area, perfect for entertaining, with skylights that fill the room with natural light, and generous storage space. There are also bi-folding doors opening out onto a delightful terrace.



# Oakhurst Grove, London, SE22



**Third Floor**



**Second Floor**

Total area (approx.): 100.5 sq. m (1,081.8 sq. ft)  
Terrace: 10.1 sq. m (108.7 sq. ft)