



Dunstans Road, SE22

£850,000

This rare, un-extended, three bedroom, Victorian house, offers great potential for expansion (STPP) into the loft and also the garden. It's positioned within a sought after residential area close to Peckham Rye and is offered chain free.

Convenient transport links include East Dulwich and Honor Oak Park Stations which combined offers services into London Bridge and Victoria as well as Overground links into Shoreditch and Canada Water. Lordship Lane is in easy reach for it's fantastic array shops, cafes, bars and restaurants and Peckham Rye Park is just round the corner.

Features

- Terraced Victorian
- Through Reception
- Three bedrooms
- Private Garden
- No Onward Chain
- Sought After Location



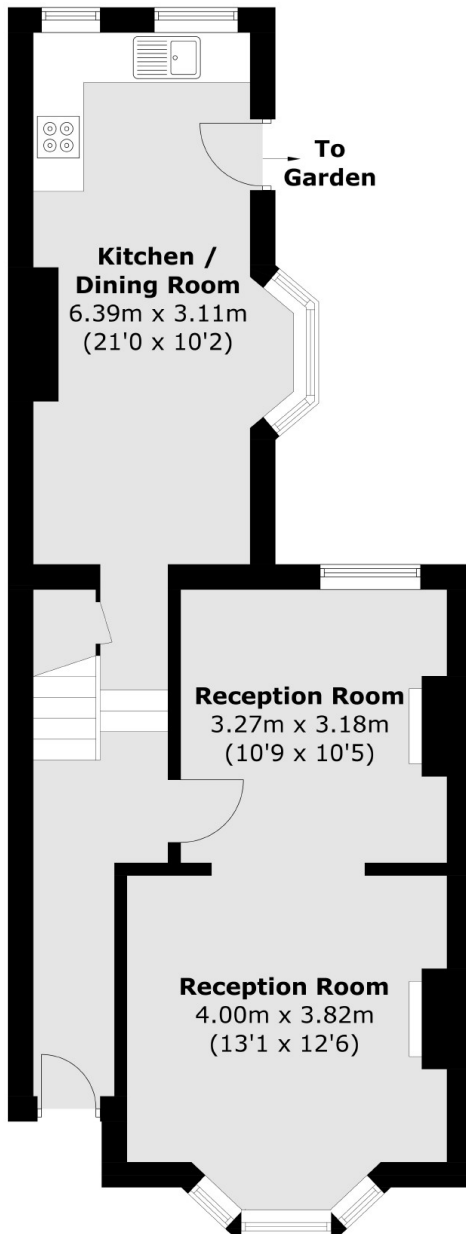
Dunstans Road, SE22

The house has particularly good proportions and comprises double reception with bay window to the front and high ceilings, A split-level entrance hall leads through to the rear, it opens into a sizeable kitchen/breakfast room with ample space for a table and extensive units. With windows to the side and rear it receives plenty of natural light and affords an incoming buyer to build out sideways to create a special and sizeable kitchen/family extension.

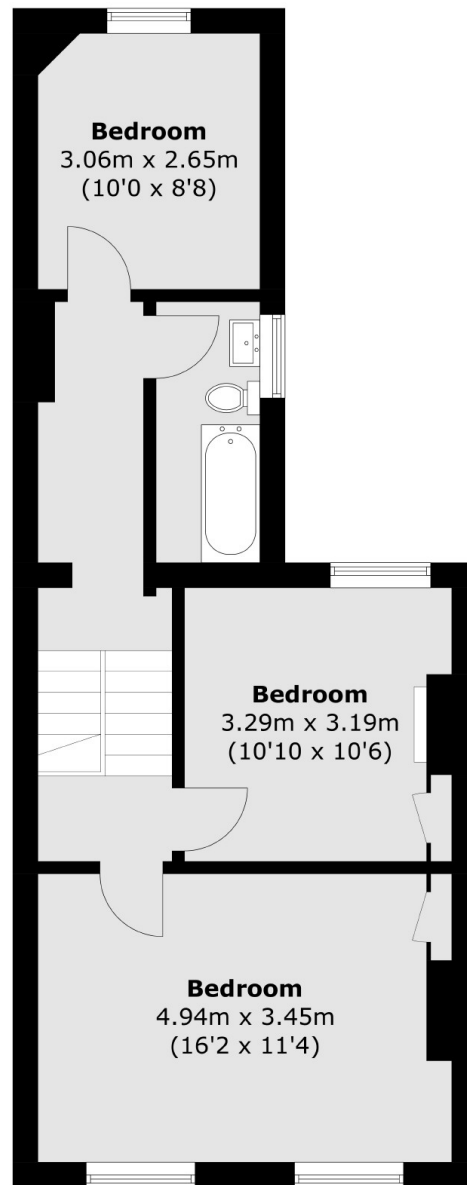
The first floor provides three good-size bedrooms and a family bathroom/WC, whilst the loft space has the potential to be converted to create a further bedroom and a shower room with the relevant planning permissions.



Dunstans Road,
London, SE22



Ground Floor



First Floor

Total area (approx.): 103.6 sq. m (1,115.1 sq. ft)