



Underhill Road, SE22

£300,000

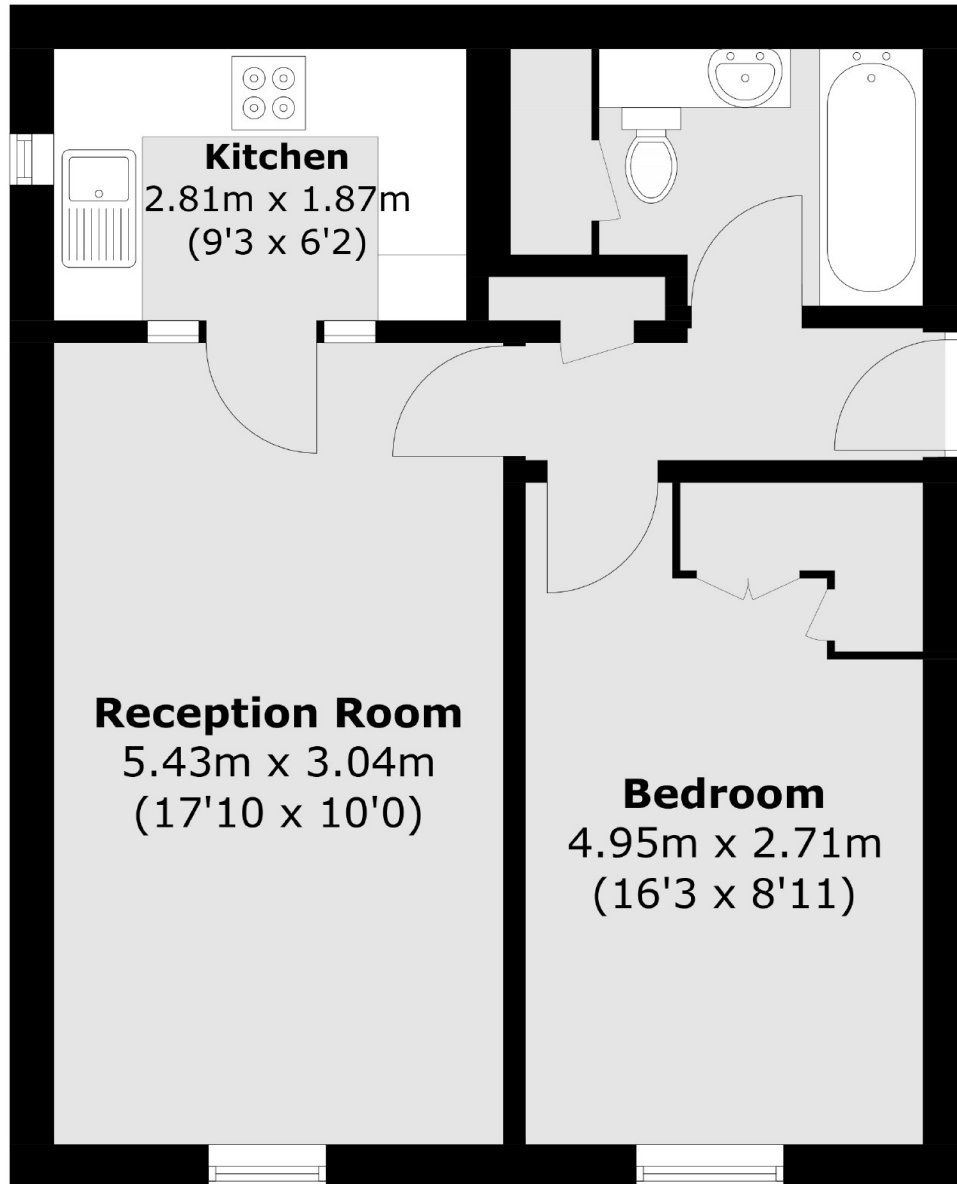
Lovely large one bed raised ground floor flat in a quiet residential road close to Lordship Lane. Presented and decorated to a high standard, situated on the raised ground floor of this well kept building just off of Lordship Lane. The property is an ideal first time buy with the added bonus of being sold with a recently extended lease and a fantastic communal garden.

Belvoir Lodge is quietly and securely tucked away off Lordship Lane perfectly placed to enjoy the vibrant mix of independent bars, restaurants, and well-known high street names. With excellent transport links, West Dulwich, East Dulwich and Forest Hill stations are a short walk or bus away providing frequent rail services to London Bridge, Victoria, and the City.

Features

- Chain Free
- Off Street Parking
- Gated Development
- Communal Garden
- Long Lease
- Juliette Balcony

Underhill Road, London, SE22



Total area (approx.): 46.7 sq. m (502.6 sq. ft)