



## Peckham Rye, SE22

£375,000

Forming part of an elegant Victorian house with beautifully restored frontage is this top floor period apartment. Situated within a prime position over looking Peckham Rye, the property benefits from having a share of the freehold and is offered with no onward chain. On entering the building you are immediately welcomed by immaculate communal areas. The apartment itself is located on the top floor with beautiful high ceilings and feature fireplace, and offers fantastic views over the Rye. All rooms are well proportioned, and are neutrally decorated throughout with generous storage space. An ideal first time purchase.

Peckham Rye is located in the heart of East Dulwich moments from an abundance of shopping amenities and excellent restaurants and bars along Lordship Lane. Peckham Rye & East Dulwich stations provides rail links to the city with the open spaces of Peckham Rye Park on your

### Features

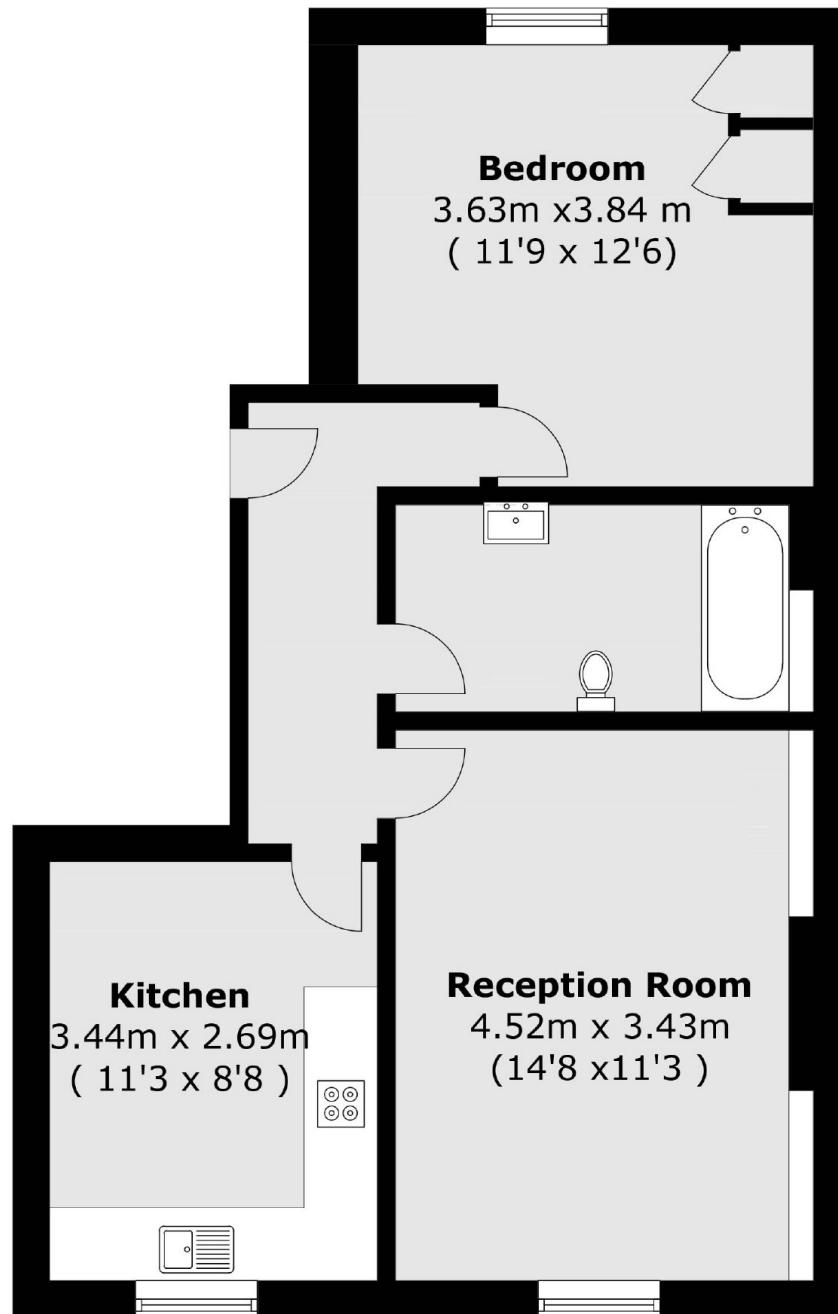
- Top Floor
- Large Rooms
- Views Over Peckham Rye Park
- Share Of The Freehold
- Desirable Location
- No Onward Chain



**Peckham Rye, SE22**



# Peckham Rye, London, SE22



Total area (approx.): 50.1 sq. m (539.3 sq. ft)