



Homestall Road, SE22

£1,600,000

A stunning 1930s Semi Detached house on a quiet sought after road in East Dulwich boasting over 2400sq ft with a delightful sunny garden.

Honor Oak Park station provides the London Overground to Canada Water and Shoreditch and trains to London Bridge and Victoria stations. The house is also conveniently located for Fairlawn Primary School, which is just over half a mile away and all the Dulwich independent schools are easily accessible. Peckham Rye is also a few minutes' walk away as well as the excellent shops and restaurants in Lordship Lane.

Features

- Semi Detached
- Large Extended Kitchen
- Five Double Bedrooms
- Three Bathrooms
- Sunny Garden
- Off Street Parking



Homestall Road, SE22

Downstairs comprises of a family living room with a working fireplace a feature that you will find throughout the whole home, a magnificent open plan kitchen dining area fitted out with a lovely , which leads seamlessly out to a substantial south west facing garden

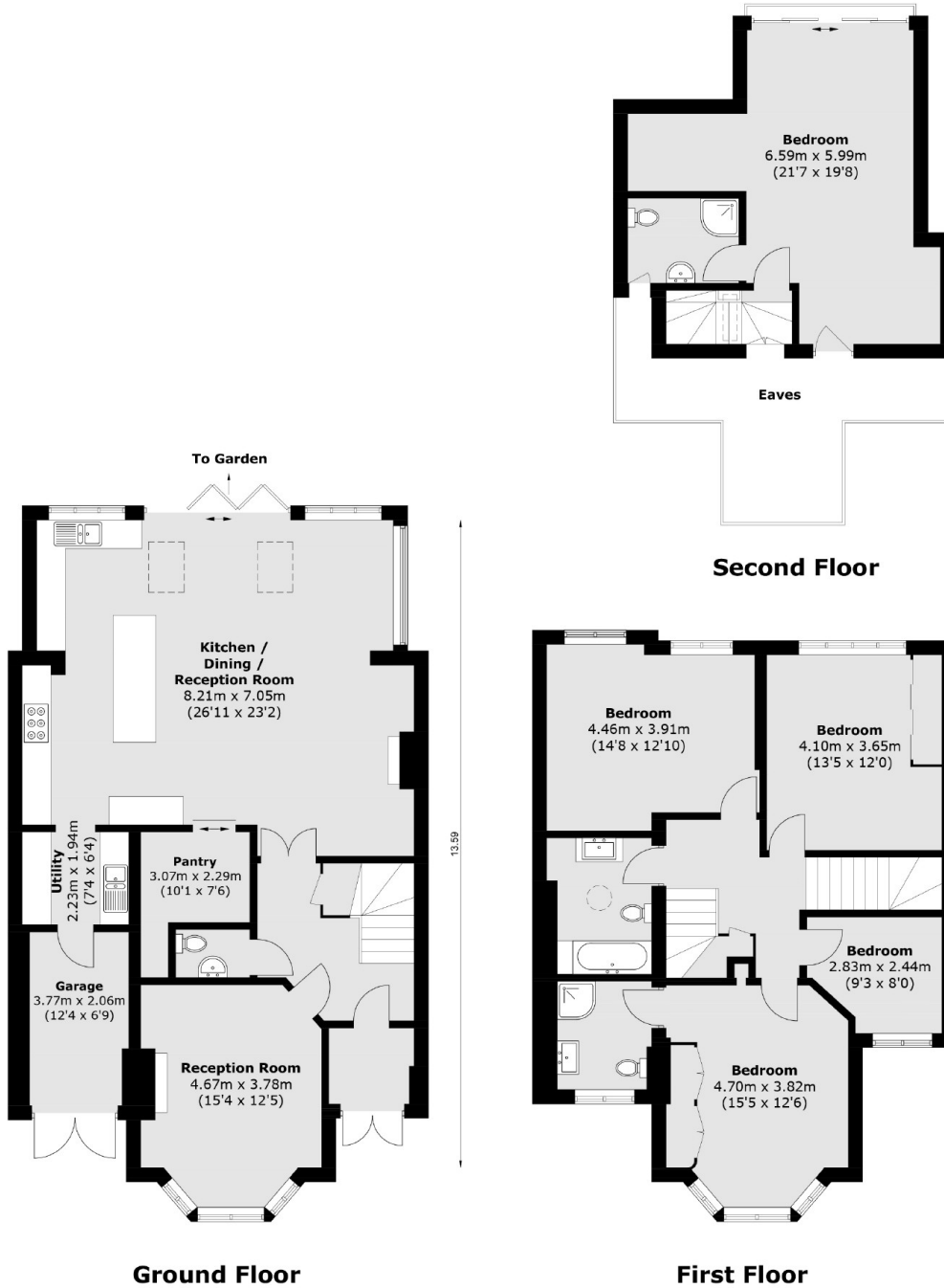
Upstairs there are five bedrooms and three bathrooms, two of which are en-suite and a further family bathroom.

There are sunning views over the city and the neighbouring green spaces of Aquarius Golf Club. The overall feel of this property is one of a warm family home with a kitchen/reception room that would make you want to entertain family and friends both summer and winter.

Homestall Road is a quiet residential road tucked away in East Dulwich but easy access to the shops bars and restaurants in the area.



Homestall Road, London, SE22



Total area (approx.): 223.1 sq. m (2401.3 sq. ft)
(Excluding Eaves)