



## Barry Road, SE22

£625,000

This wonderfully light two-bedroom conversion flat combines spacious, well-appointed accommodation with a clean neutral finish. Occupying the first floor of a wide Victorian house, it has excellent proportions and comes with the added benefit of a private balcony and a share of freehold.

Barry Road is perfectly positioned for the green open spaces of Peckham Rye as well as all the local amenities available on Lordship Lane. Mainline train connections can be found from East Dulwich, Peckham Rye & Honor Oak Stations.

### Features

- First Floor
- Private Balcony
- Excellent Condition
- Two Bedrooms
- Share Of Freehold
- Sought After Road



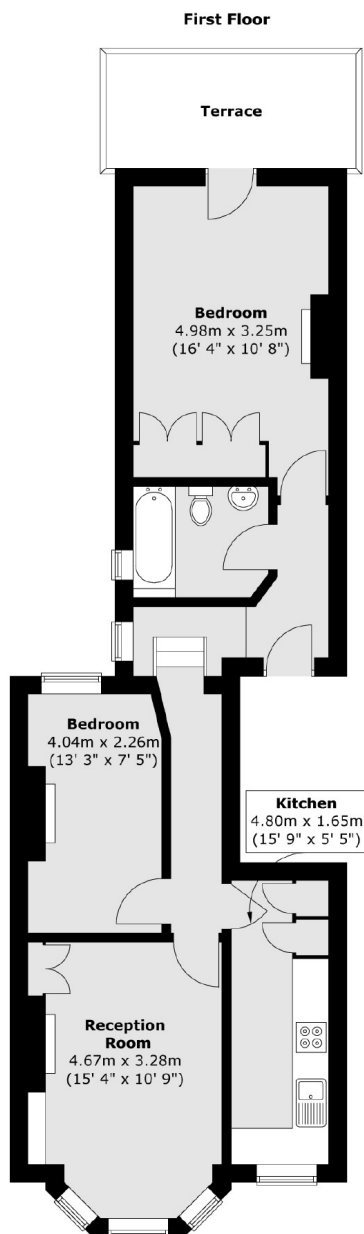
## Barry Road, SE22

The flat itself is very well presented. Both bedrooms are generous doubles, especially the large master bedroom which also has fitted wardrobes. A modern bathroom has smart chrome shower fittings, taps and other fixtures.

The front reception room has lovely proportions, an attractive fireplace with built in alcove cupboards, plus large windows to the front bay. It also has attractive wooden floors. The kitchen has extensive storage units and good quality integrated appliances. The private balcony, over looking neighbouring gardens provides that all important outside space



# Barry Road, London, SE22



Total area (approx.) : 64.2 sq. m (691 sq. ft)  
Total terrace area (approx.) : 6.6 sq. m (71 sq. ft)