



Rosendale Road, SE21

£400,000

A fabulous one double bedroom, raised ground floor Victorian conversion which receives bundles of natural light. This super flat is well proportioned throughout, has a stylish open plan kitchen/reception with high ceilings and feature fireplace and use of a communal garden.

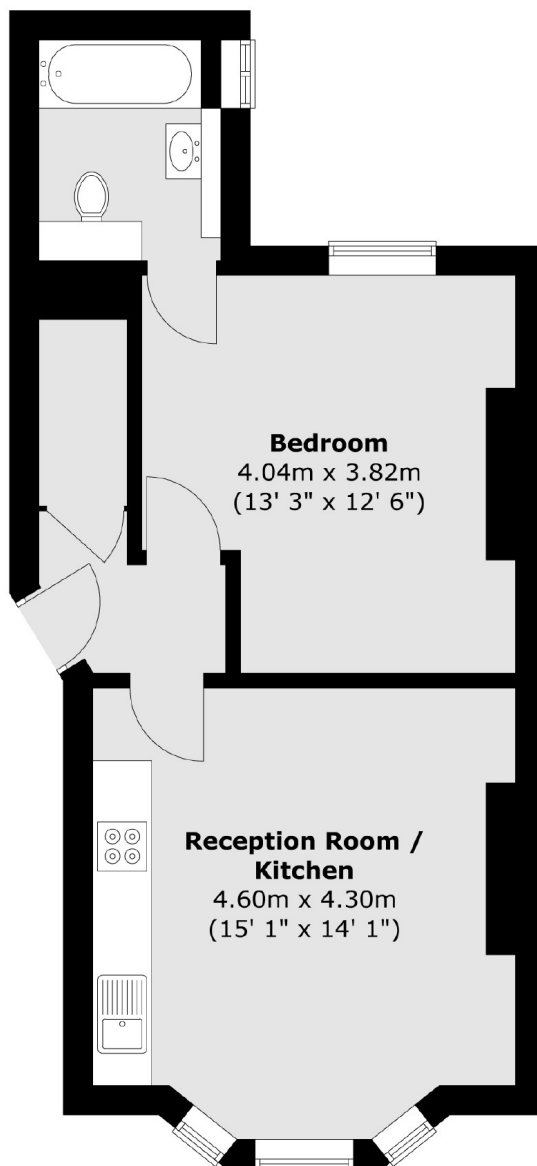
Rosendale Road is perfectly positioned for access to both West Dulwich and Dulwich Village with their numerous independent shops, bars and restaurants. Frequent rail links to central London can be found from West Dulwich and Tulse Hill station offering the Thameslink to London Blackfriars and St Pancras.

Features

- Raised Ground floor
- Open Plan Kitchen/Reception
- Period Features
- 125 Year Lease
- Sought After Road
- No Onward Chain

Rosendale Road, London, SE21

Ground Floor



Total area (approx.) : 43.2 sq. m (465 sq. ft)