



Mundania Road, SE22

£2,100,000

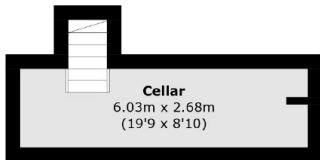
A rare opportunity to acquire one of these substantial double-fronted Victorian houses which can be found south of Peckham Rye Park. Measuring 340 Sq m / 3444 Sq Ft this one has been extended to provide five bedrooms, loft room and a large kitchen leading to an enormous sunny garden.

Mundania Road is within easy reach to local amenities including a number of independent shops and bars, as well as the green open spaces of Peckham Rye Park. There are frequent bus routes along Forest Hill Road and rail links at Honor Oak Park.

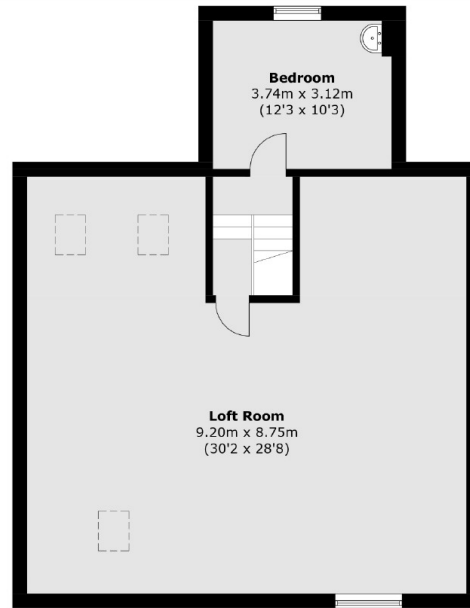
Features

- Over 3400 sq ft
- Double Fronted Semi Detached
- Three Reception Rooms
- Two Bathrooms
- Large Garden
- Side Extension Done

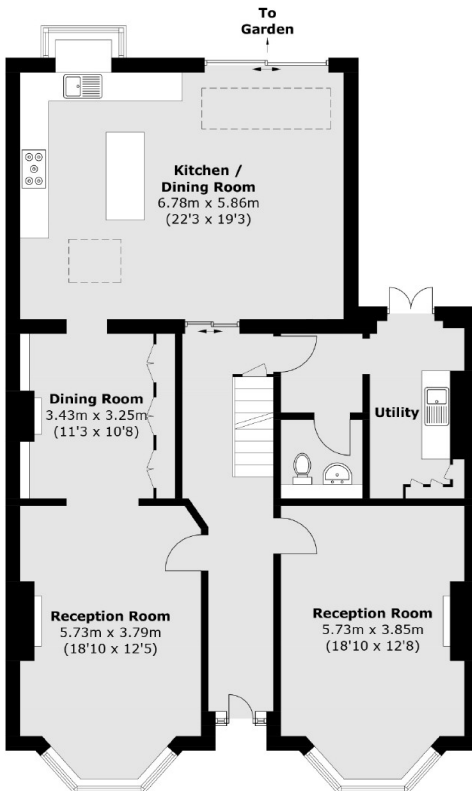
Mundania Road, London, SE22



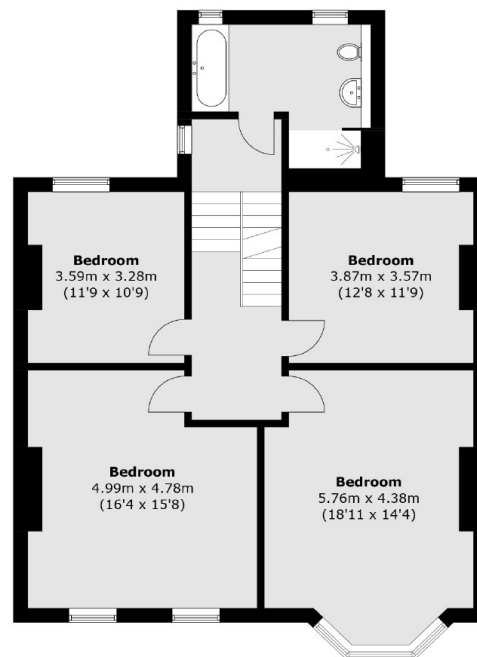
Lower Ground Floor



Second Floor



Ground Floor



First Floor

Total area (approx.): 320.0 sq. m (3,444.4 sq. ft)