



Crystal Palace Road, SE22

£325,000

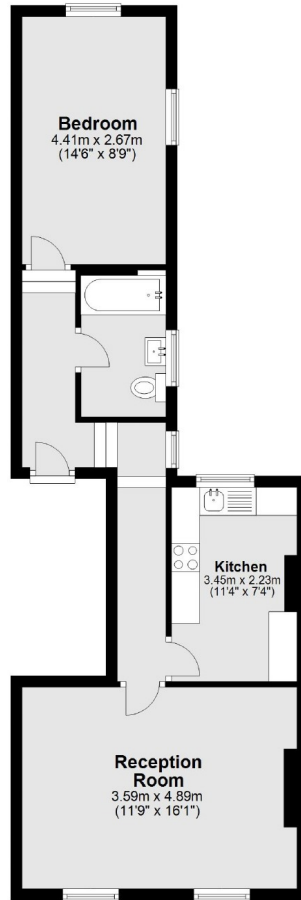
Centrally located one bedroom flat in East Dulwich, ideal for first time buyer or buy to let investor. Located within a Victorian house this conversion flat ticks all the boxes. Well presented throughout, it offers a good-size double bedroom, bright reception with plenty of space for dining, stylish kitchen and modern bathroom. Offered chain free, it presents the perfect step on to the property ladder.

The property is superbly located for East Dulwich station which has direct services to The City and West End. It is close to the green spaces and recreational facilities of Peckham Rye and has fashionable Lordship Lane bars, shops and restaurants on its doorstep.

Features

- Central Location
- Station Nearby
- Double Glazed Windows
- Large Loft Space
- Close To Parks
- Great Shops & Bars Nearby

Crystal Palace Road, London, SE22



Total area: approx. 49.7 sq. metres (534.7 sq. feet)