



East Dulwich Grove, SE22

£465,000

This wonderfully light two bedroom flat arranged a split-level landing combines spacious, well-appointed accommodation with a clean neutral finish.

The location is ultra-convenient being within easy reach to the shops, bars and restaurants of Lordship Lane. East Dulwich mainline provides frequent rail links to London Bridge with further overground services at Denmark Hill. The green open spaces of Dulwich and Peckham Rye Parks are just a short walk away.

Features

- Naturally Bright
- Open Plan Living
- Two Bedrooms
- Stylish Bathroom/WC
- Sought After Location
- No Onward Chain



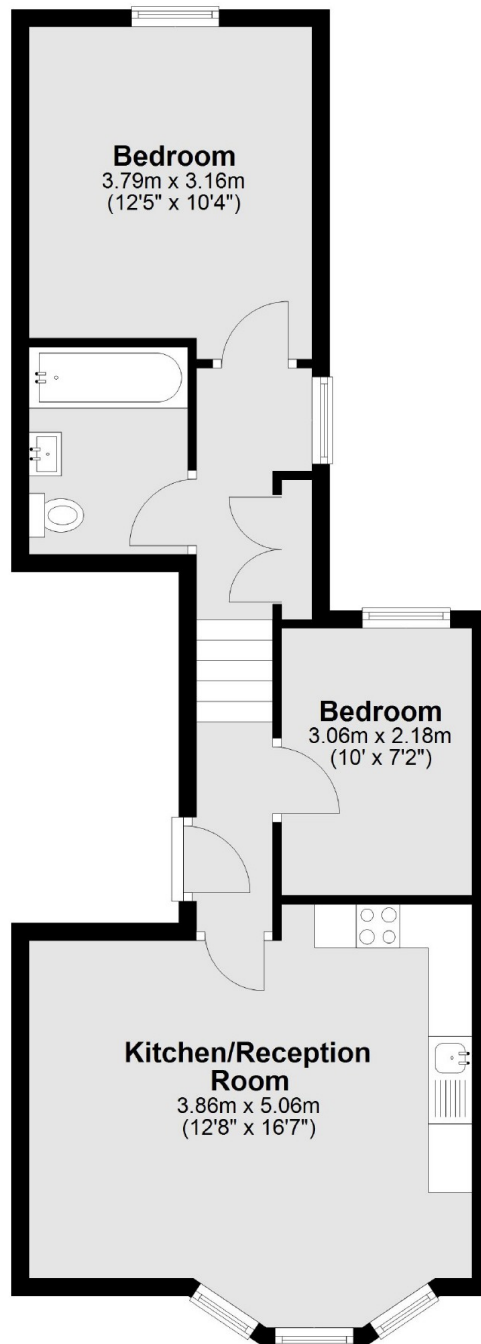
East Dulwich Grove, SE22

Outdoing its typical Victorian counterparts in both space and light departments, this first floor flat offers a full width front reception room with space for a dining table, large windows to the front bay and attractive flooring

The open plan kitchen has modern high gloss units and good quality integrated appliances. The bedrooms are positioned on separate levels offering a degree of privacy and are served by a stylish bathroom/WC



East Dulwich Grove, London, SE22



Total area: approx. 52.1 sq. metres (561.2 sq. feet)