



Melbourne Grove, SE22

£300,000

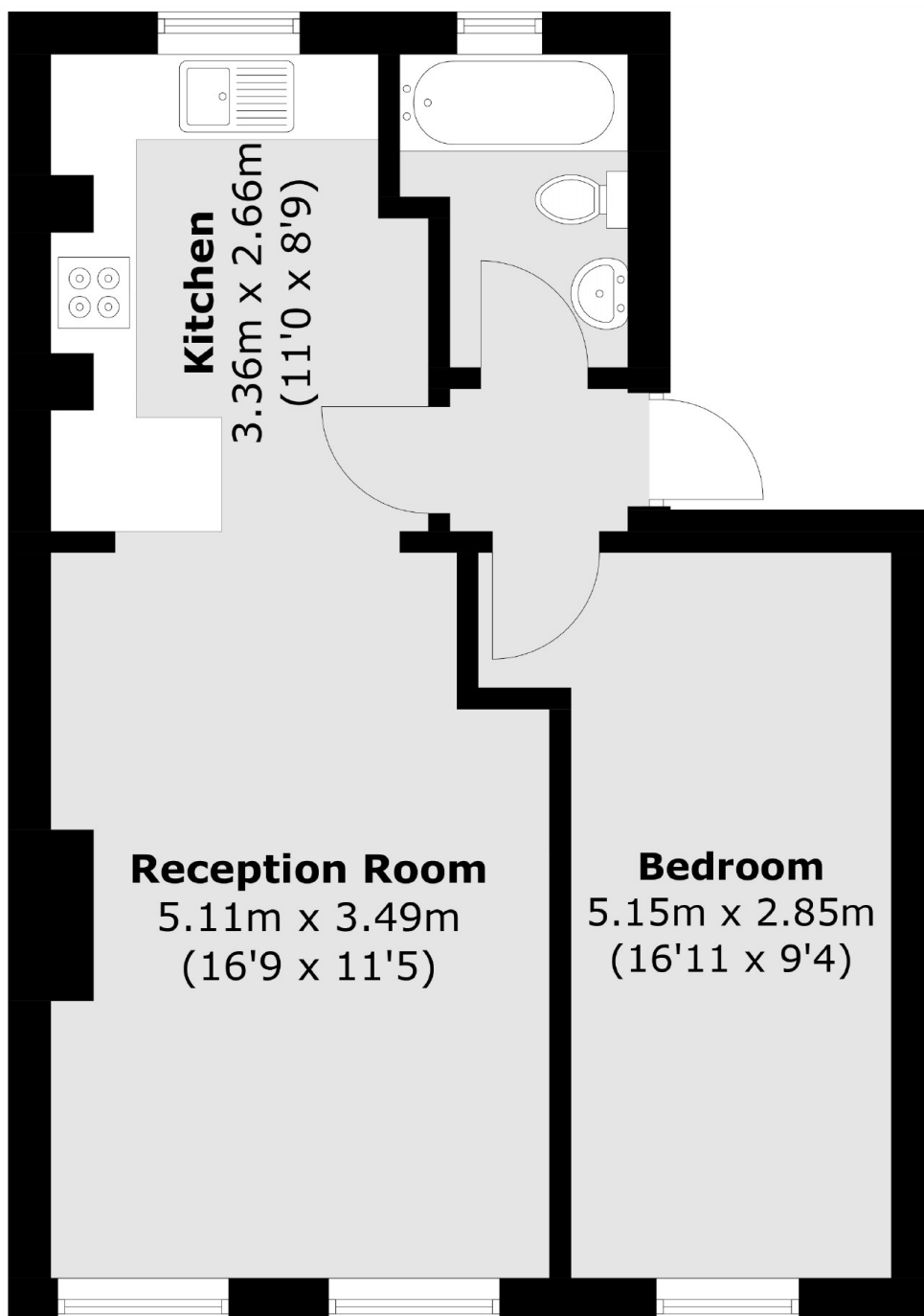
Top floor one bedroom Victorian apartment situated in a highly desirable area. The property offers an abundance of natural light with a dual aspect open plan reception / kitchen, good size double bedroom and bathroom/WC. Offered to the market with no onward chain.

Melbourne Grove is a short walk to East Dulwich station with regular trains through to London Bridge, along with frequent bus routes to Central London. Lordship Lane and Peckham Rye are all close by and offer a range of restaurants bars and leisure amenities.

Features

- Top Floor
- Open-plan Reception/Kitchen
- Double Bedroom
- Naturally Bright
- Sought After Location
- No Onward Chain

Melbourne Grove, London, SE22



Total area (approx.): 44.4 sq. m (477.9 sq. ft)