



Crystal Palace Road, SE22

£699,000

Built in 2019 and boasting close to 850 sq/ft of internal lateral space, this modern apartment benefits a private balcony, allocated parking and is offered with a share of the freehold. Sold with no onward chain.

Crystal Palace Road is a sought after residential street within easy reach of the open spaces of Peckham Rye Park and Lordship Lane with plenty of independent shops, restaurants and cafes plus a cinema and North Cross Road market. Zone 2 stations with fast links into central London from East Dulwich and Peckham Rye are nearby.

Features

- Modern Apartment
- Two Double Bedrooms
- Balcony
- Communal Roof Terrace
- Allocated Parking
- Share Of Freehold

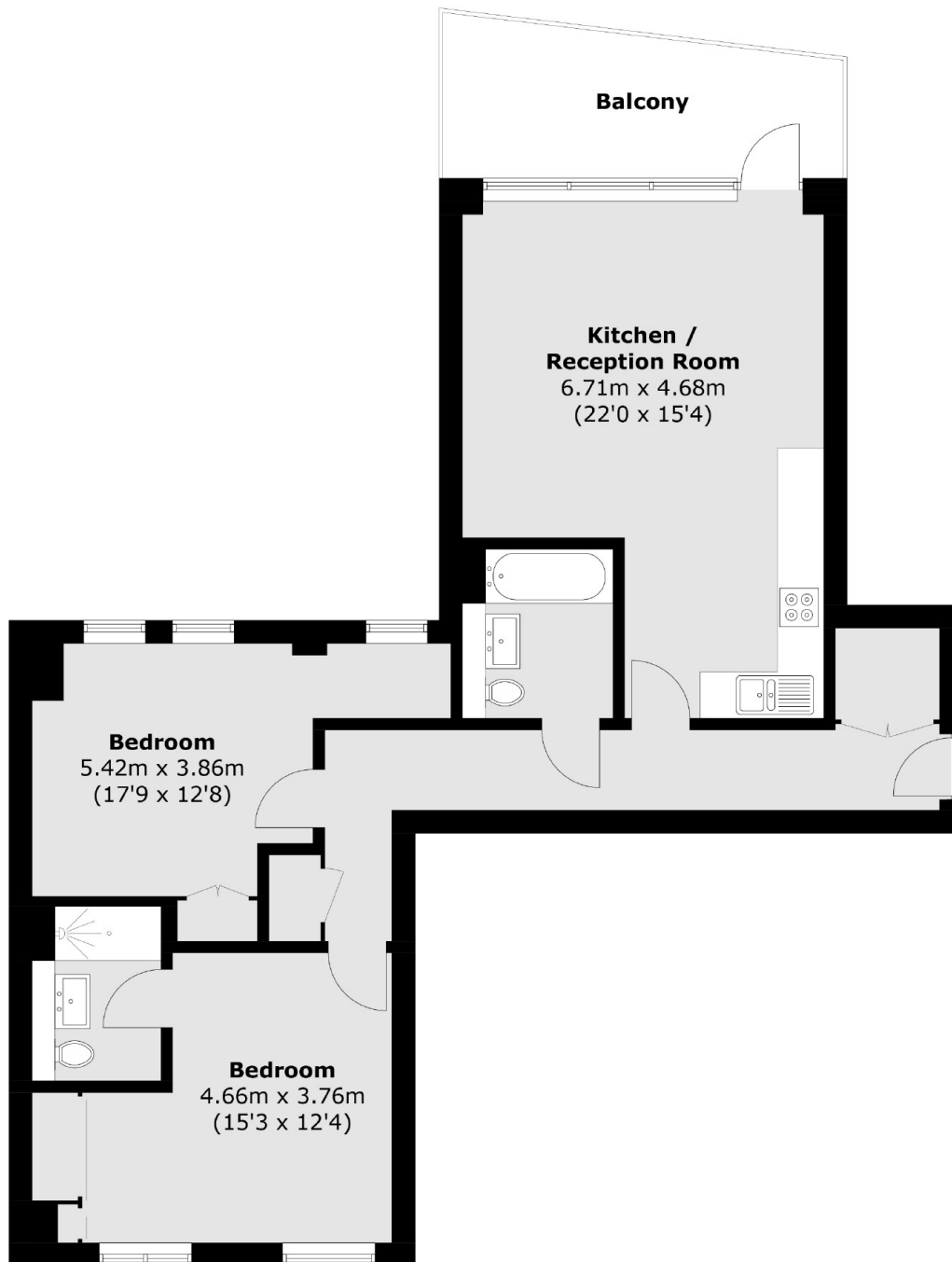


Crystal Palace Road, SE22

The property comprises two good size double bedrooms, two bathrooms, one being en-suite to the master bedroom. The kitchen / reception room is open plan leading to a good-size sunny balcony. Underfloor heating can be found throughout. There is also a large communal roof terrace offering fantastic views of the London skyline.



Crystal Palace Road, London, SE22



Total area (approx.): 78.9 sq. m (849.3 sq. ft)
Balcony (approx.): 9.5 sq. m (102.2 sq. ft)