



## Homestall Road, SE22

£500,000

Located on the ground floor and with its own entrance, this delightful property offers well-balanced and generous accommodation with all its square footage fully utilised.

Hurley Lodge is a small 1960s development found on the junction of Homestall Road and Marmora Road. It faces a private road and is perfectly placed for the green open spaces of Peckham Rye Park. Local amenities including a number of independent shops and bars and frequent bus services can be found along Forest Hill Road.

### Features

- Ground Floor
- Own Entrance
- Private Garden
- Two Double Bedrooms
- Separate Kitchen
- Over 800 sq/ft





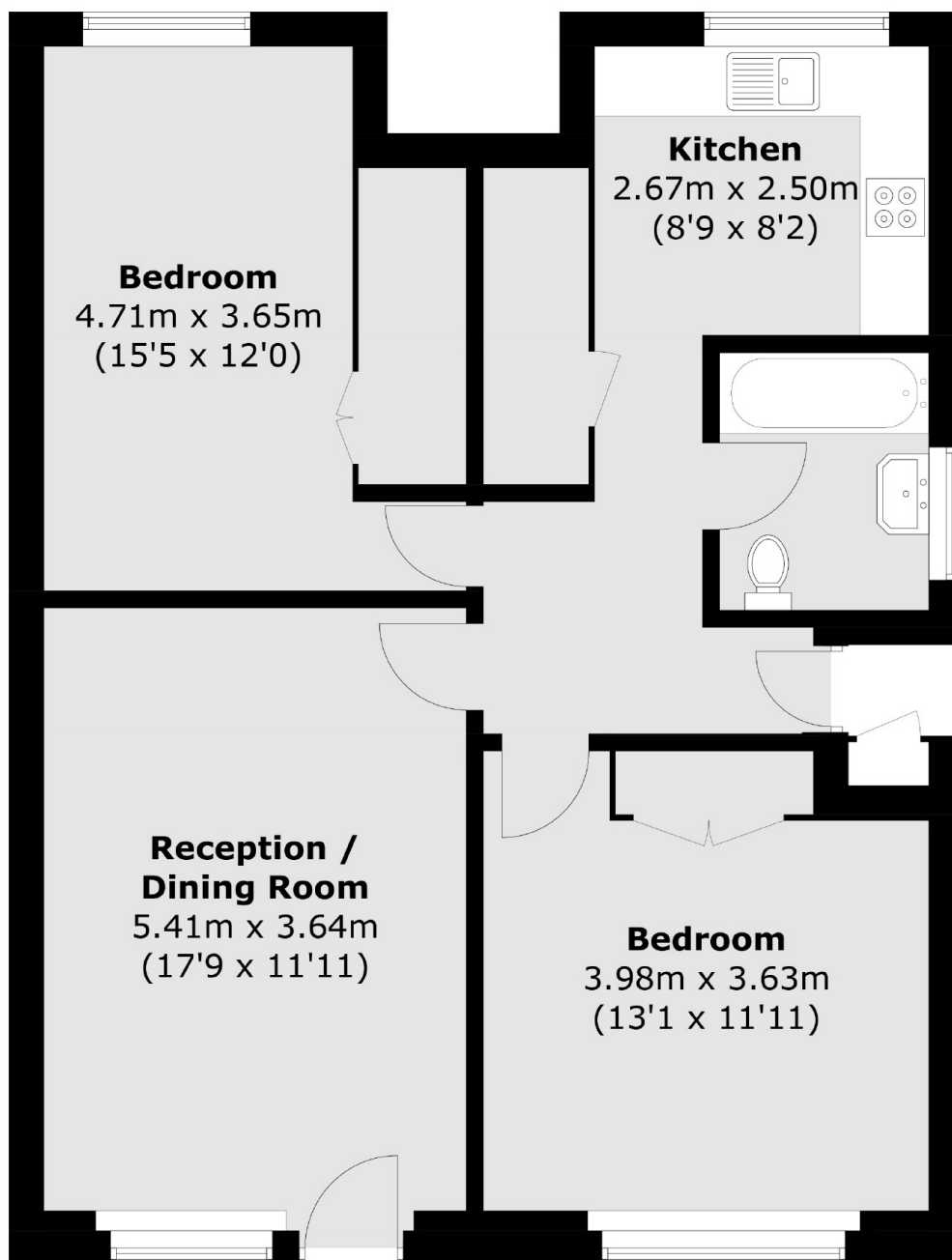
## Homestall Road, SE22

The property comprises two generous sized double bedrooms, a large reception / dining room with direct access to private garden, which leads onto very well maintained communal gardens. There is a separate modern kitchen and fully fitted bathroom.





# Homestall Road, London, SE22



Total area (approx.): 74.6 sq. m (803.0 sq. ft)