



Highwood Close, SE22

£550,000

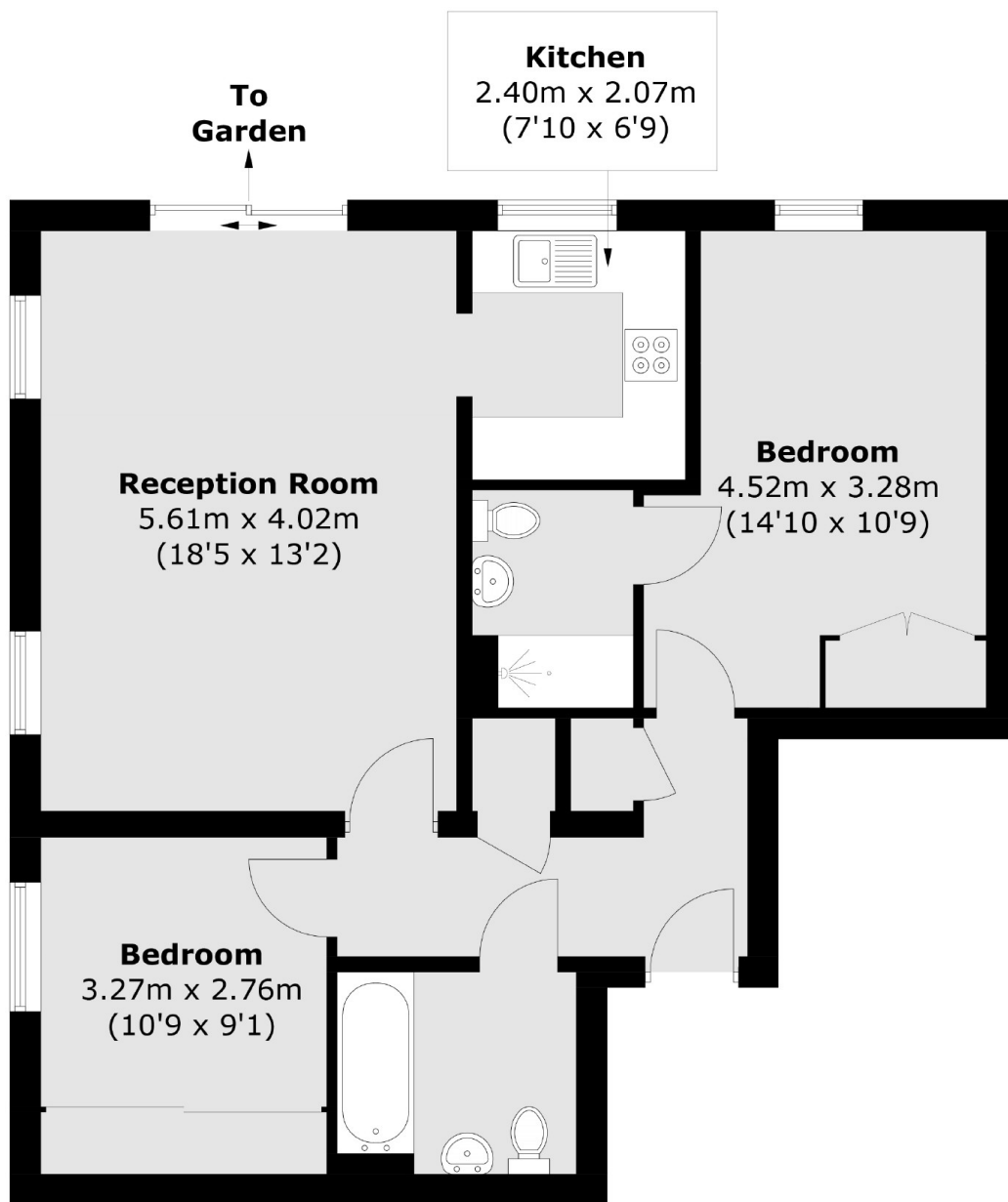
Situated within a private gated development, this two double bedroom, two bathroom flat has a large private garden and benefits from off street parking.

Ashdown Court is perfectly placed for many of the areas amenities, including independent restaurants, local shops and bars. The green open spaces of Dulwich Park are close at hand as are frequent rail connections from Forest Hill (Overground) and West Dulwich stations.

Features

- Two Double Bedrooms
- Two Bathrooms
- Chain Free
- Off Street Parking
- Large Private Garden
- Close To Transport

Highwood Close, London, SE22



Total area (approx.): 69.1 sq. m (743.8 sq. ft)

Dexters

East Dulwich
98 Grove Vale
London
SE22 8DR
Sales
020 8742 4142

Energy Rating: D. We aim to make our particulars both accurate and reliable. However they are not guaranteed; nor do they form part of an offer or contract. If you require clarification on any points then please contact us, especially if you're traveling some distance to view. Please note that appliances and heating systems have not been tested and therefore no warranties can be given as to their good working order.

 **RICS** | Regulated
Estate Agent
and Letting Agent

dexters.co.uk