



Dovedale Road, SE22

£850,000

Built in 2021, this bright and modern two bedroom detached house, close to Peckham Rye, has great living space and has been neutrally decorated throughout to create a fresh contemporary home with a sunny rear garden. It provides well-balanced accommodation and represents a fantastic option to acquire a freehold property in a very sought after location.

Dovedale Road can be found directly off Colyton Road which runs alongside the open space of Peckham Rye. A wide variety of wining, dining and shopping options found on Lordship Lane, with transport links provided via multiple bus networks and rail links from Honor Oak and Peckham Rye station serving London Bridge and

Features

- Detached House
- Over 1000 Sq Ft
- New Build warranty
- Underfloor heating
- Close to Peckham Rye Park
- Great transport links



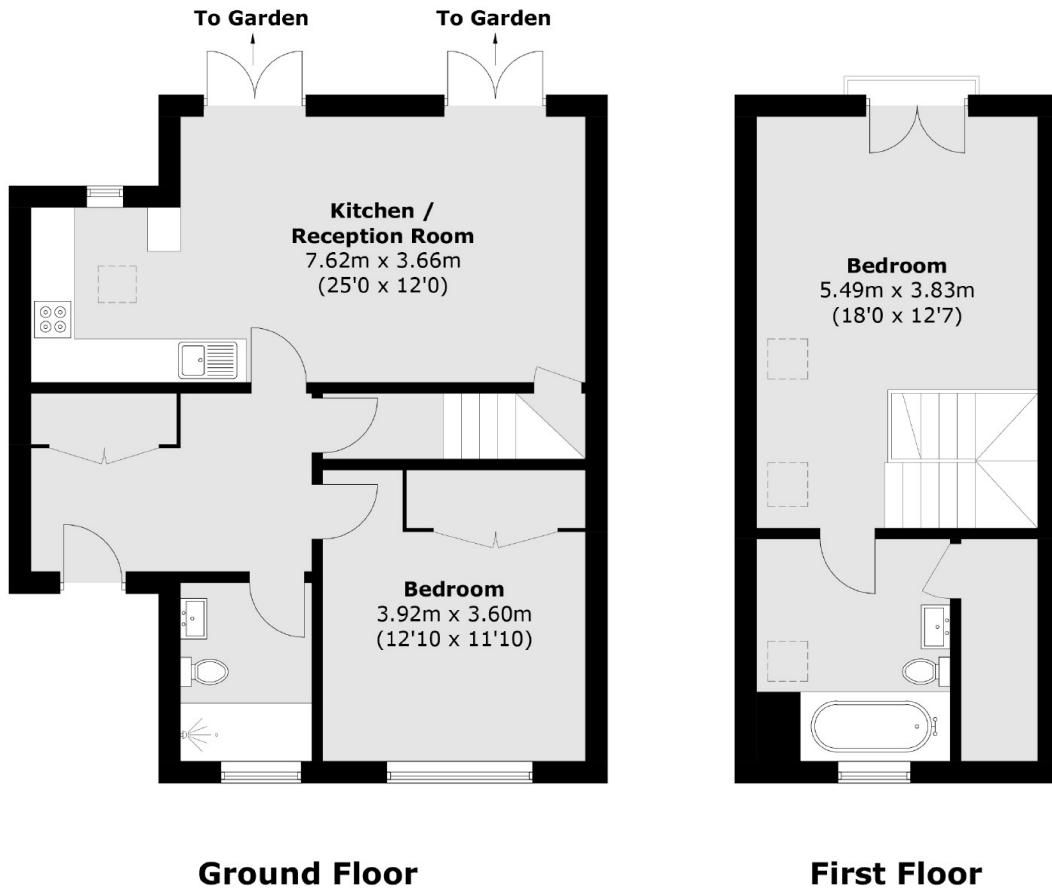
Dovedale Road, SE22

The ground floor offers a spacious open plan kitchen / reception room with a view and double doors out to the lawned garden whilst the first of two good-size bedrooms is served by a stylish shower room and can be found of the large entrance hall.

Upstairs, a generous second double bedroom receives lots of natural light from sky light windows and Juliette balcony and benefits from an ensuite bathroom leading through to a useful storage cupboard



Dovedale Road,
London, SE22



Total area (approx.): 94.2 sq. m (1,014.0 sq. ft)