



## Underhill Road, SE22

£1,150,000

Set in a delightful residential road close to the amenities of Lordship Lane, this beautiful Victorian property boasts stylish interiors, is tastefully decorated throughout, and is offered with no onward chain.

Walk to the beautiful Peckham Rye Park in minutes. You have Lordship Lane with plenty of independent shops, restaurants and cafés, and North Cross Road with its Saturday market. Zone 2 stations with fast links into central London from East Dulwich and Peckham Rye are nearby.

### Features

- Victorian Terraced House
- Three Double Bedrooms
- Extension Potential STPP
- Good Size Landscaped Garden
- Desirable Location
- No Onward Chain



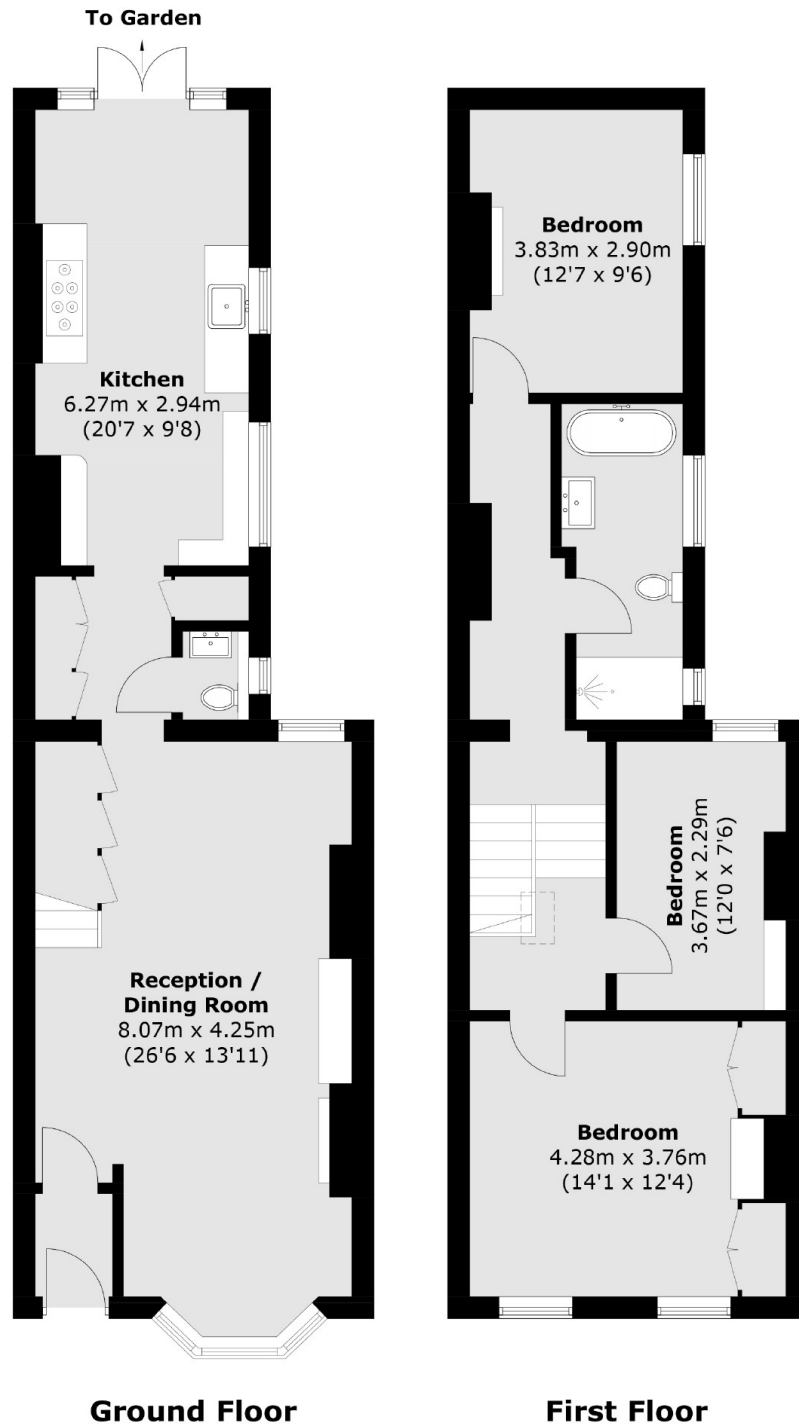
## Underhill Road, SE22

The ground floor is open plan, offering an immense sense of space & light. The double reception room has ample space for a large dining table, and leads onto a contemporary good size kitchen, with beautiful crittall doors. These open out onto a fully landscaped designed garden.

Upstairs are three good size bedrooms and a large fully refurbished bathroom with bathtub and separate shower. There is also potential to extend into the loft as well as side return STPP.



# Underhill Road, London, SE22



Total area (approx.): 116.0 sq. m (1,248.6 sq. ft)