



## Crystal Palace Road, SE22

£575,000

Large two double bedroom Victorian Conversion flat in the heart of East Dulwich, just a short walk from Lordship Lane.

Situated on a sought after centrally located road in East Dulwich with two double bedrooms a large reception room with separate kitchen. This split level flat comes to the market chain free and with the share of freehold.

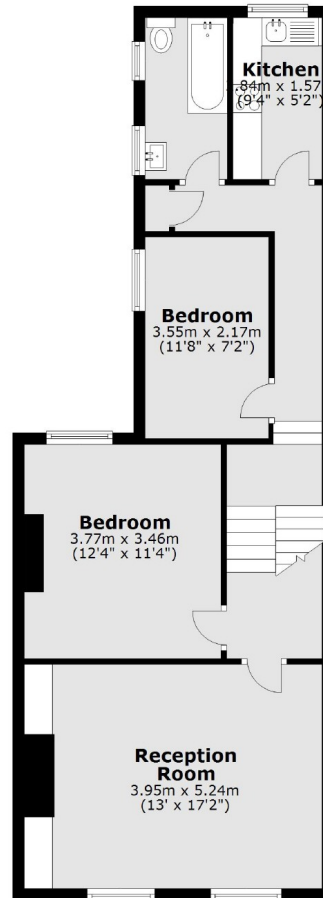
Crystal Palace Road is a sought after residential street within easy reach of the open spaces of Peckham Rye Park and Lordship Lane with plenty of independent shops, restaurants and cafes plus a cinema and North Cross Road market. Zone 2 stations with fast links into central London from East Dulwich and Peckham Rye are nearby.

### Features

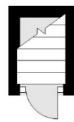
- Chain Free
- Share Of Freehold
- Over 700 Sq Ft
- Close To Dulwich Park
- Close To Transport
- Short Walk To Lordship Lane

# Crystal Palace Road, London, SE22

## First Floor



## Ground Floor



Total area: approx. 65.3 sq. metres (702.8 sq. feet)