



Forest Hill Road, SE22

£575,000

At just over 900 SQ.FT, this wonderfully light two double bedroom split-level flat combines spacious, well-appointed accommodation with a clean neutral finish. Occupying the entire upper part of an attractive Victorian house, it has excellent proportions and is offered with no onward chain.

A short walk away from Peckham Rye Park, Forest Hill Road and is perfectly positioned for the local amenities in East Dulwich. Transport links are provided via multiple bus networks and mainline rail links from Peckham Rye and Honor Oak.

Features

- Victorian Conversion
- Split-level
- Two Bedrooms
- Two Bathrooms
- No Onward Chain
- Share Of Freehold



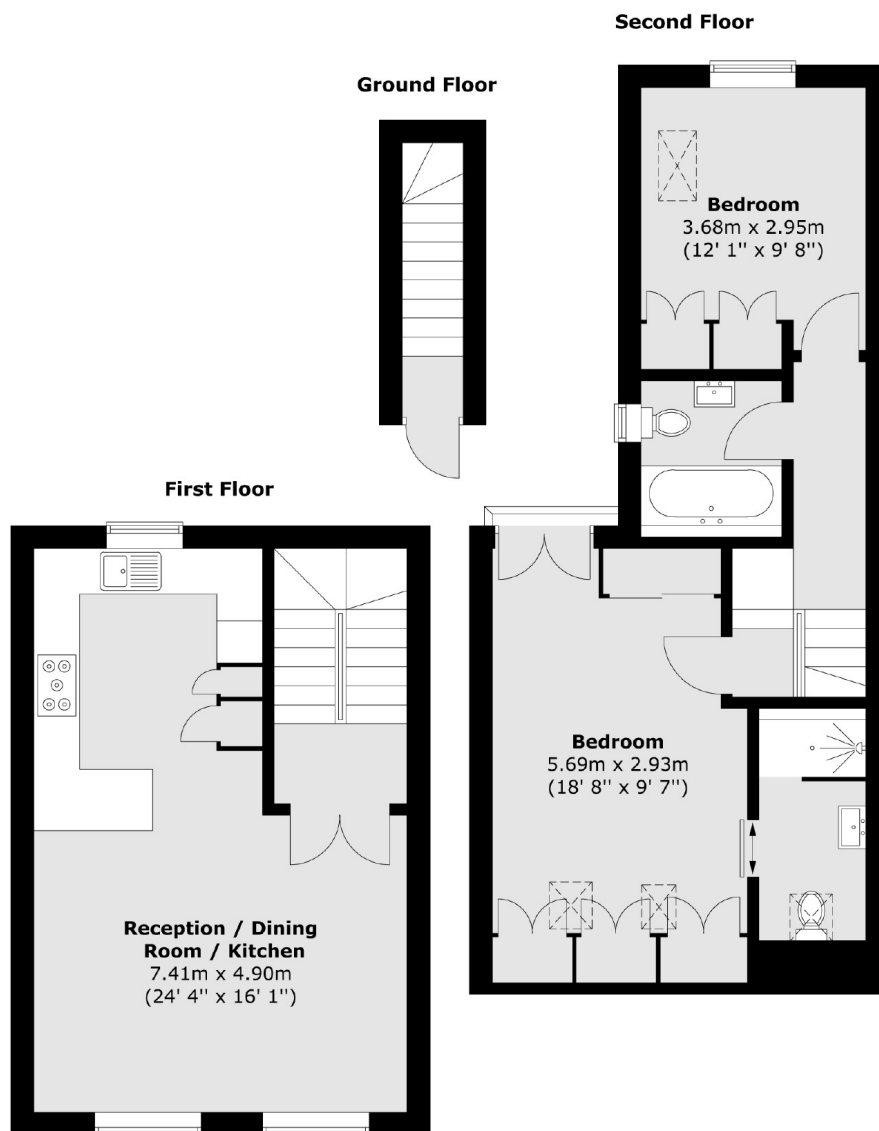
Forest Hill Road, SE22

Well-presented throughout both bedrooms have fitted wardrobes and are generous doubles, especially the large master bedroom in the converted loft which also has a contemporary shower room. There is also a second modern bathroom on the first floor landing which is fully tiled.

On the first floor the full width front reception room has lovely proportions, high ornate ceilings, plus two large windows to the front. It also has attractive wooden floors which run through to the openplan kitchen which has extensive storage units, built-in breakfast bar and good quality integrated appliances.



Forest Hill Road, London, SE22



Total area (approx.) : 84.3 sq. m (907 sq. ft)
Total balcony area (approx.) : 0.2 sq. m (2 sq. ft)