



## Jarvis Road, SE22

£525,000

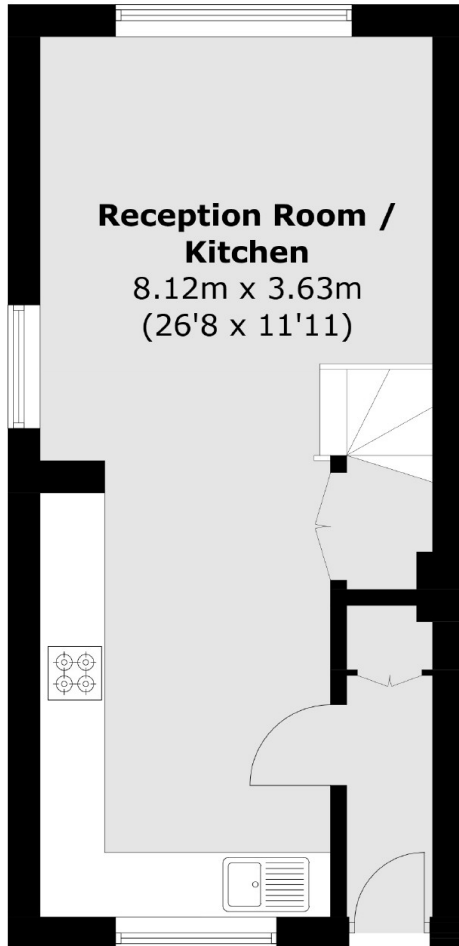
Two bed house in a quiet mews in the very heart of East Dulwich, newly refurbished to a very high standard.

Just a minutes walk away from East Dulwich station and buses to Central London as well as a handy M&S food hall and nearby Lordship Lane.

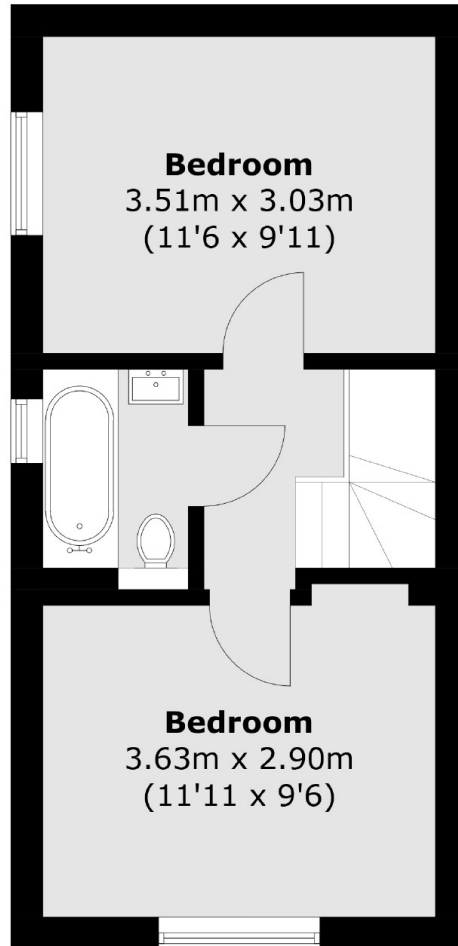
### Features

- Chain Free
- Share Of Freehold
- Two Double Bedrooms
- Close To Station
- Quiet Residential Road
- Solid Wood Floors

# Jarvis Road, London, SE22



**Ground Floor**



**First Floor**

Total area (approx.): 59.9 sq. m (644.7 sq. ft)