



Shelbury Road, SE22

£1,500,000

A stunning four bedroom semi detached 1930s family home in a most sought after quiet residential street in East Dulwich, featuring a huge kitchen/diner and a west facing garden.

Shelbury road is just a couple of minutes walk from lots of buses into town. East Dulwich, Peckham Rye and Honor Oak stations are all within walking distance. Nearby you have some of the most sought after schools and Lordship Lane with a wealth of shops, bars and restaurants.

Features

Over 2200 Sq Ft
West Facing Garden
28 x 30 ft Kitchen
Off Street Parking
Four Double Bedrooms
Three Bathrooms



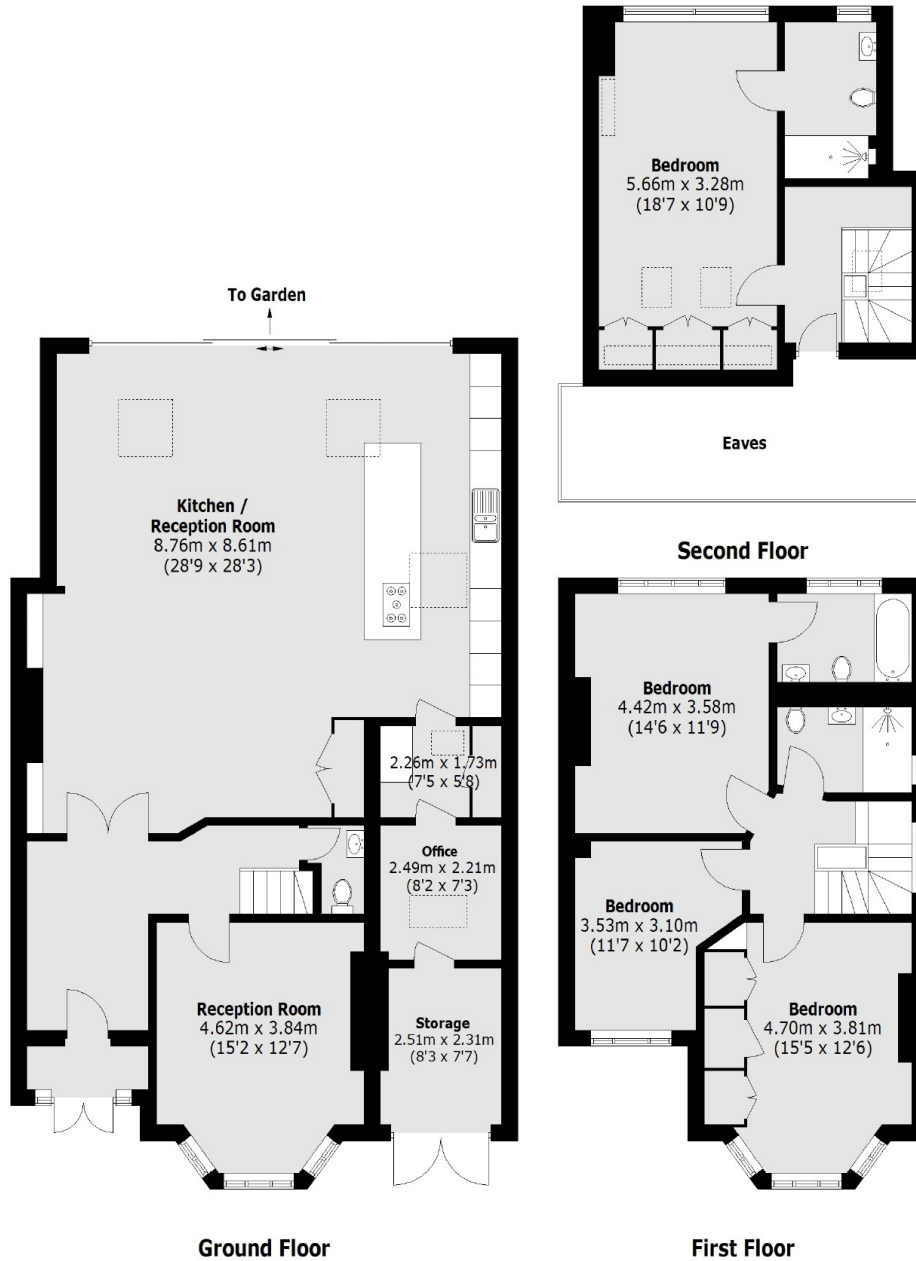
Shelbury Road, SE22

Shelbury Road is a lovely road just a few minutes walk from the fantastic open space of Peckham Rye park. This 1930s house has been extended downstairs to give you a kitchen/dining/reception room that is 28 x 30ft leading out to a large west facing garden.

Downstairs you also have exceptional storage space that can also be used as office space and access to a garage as well as a further reception room. Upstairs there are four double bedrooms and three bathrooms.



Shelbury Road, London, SE22



Total area (approx.): 217.3 sq. m (2,339 sq. ft)
(Excluding Eaves)