



Peckham Rye, SE22

£550,000

This bright and beautifully designed, two double bedroom first floor flat has been extensively modernised. Its show-piece is its 18' open-plan reception/kitchen with feature fireplace and high ornate ceilings. Perfectly positioned with views direct views over Peckham Rye Park and sold with a share of freehold.

This smart, well-designed flat occupies the first floor of this large Victorian building and has been cleverly modernised and refurbished by the present owners. To the front of the flat there are two double bedrooms, both with fitted wardrobes and views of the park. The stylish bathroom room/WC is contemporary having been fully renewed within the last few years and is accessed via a

Features

- Views Of Peckham Rye
- Two Bedrooms
- Stylish Bathroom
- Communal Garden
- Share Of Freehold
- Convenient Location



Peckham Rye, SE22

This smart, well-designed flat occupies the first floor of this large Victorian building and has been cleverly modernised and refurbished by the present owners. To the front of the flat there are two double bedrooms, both with fitted wardrobes and views of the park. The stylish bathroom room/WC is contemporary having been fully renewed within the last few years and is accessed via a useful utility area with space/plumbing for the washing machine.

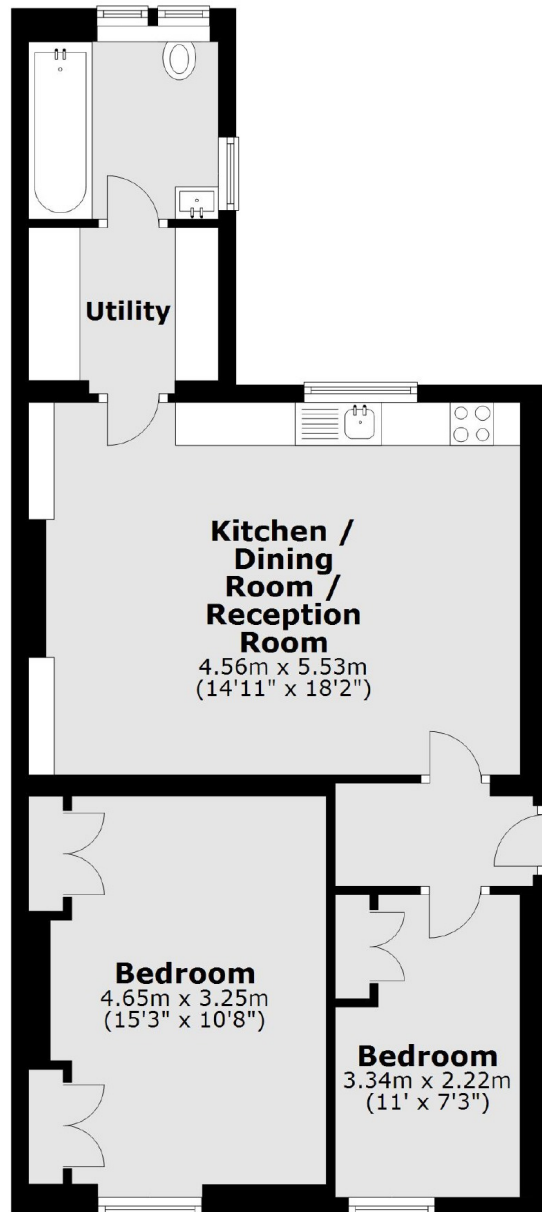
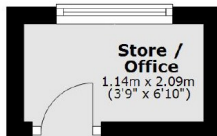
The spacious reception/kitchen has a large central sash window overlooking the communal garden making the main room wonderfully light. At one end is a sleek modern kitchen with white units and space for a dining table, at the other end are attractive wooden alcove cupboards and a beautiful fireplace. The flat has neutral decor throughout and an attractive layout ideal for a couple or sharers buying together.



Peckham Rye, London, SE22

First Floor

Raised Ground Floor



Main area: Approx. 63.5 sq. metres (683.1 sq. feet)
Plus store / office, approx. 2.4 sq. metres (25.5 sq. feet)