



North Cross Road, SE22

£600,000

This superb three bedroom, two bathroom split-level flat with private roof terrace has been extended and completely refurbished in recent years. It's offered for sale with a share of freehold making this the perfect property for a young family or those buyers looking to rent out a room.

North Cross Road is perfectly located between Dulwich Park, Peckham Rye Park and amenities of Lordship Lane with its bars, cafes, restaurants and independent shops. There are excellent transport links from East Dulwich station and Peckham Rye station as well as bus connections into the neighbouring Dulwich Village, Forest Hill, Peckham and Camberwell.

Features

- Split-Level
- Three Bedrooms
- Modern Kitchen
- Private Terrace
- No Onward Chain
- Share Of Freehold



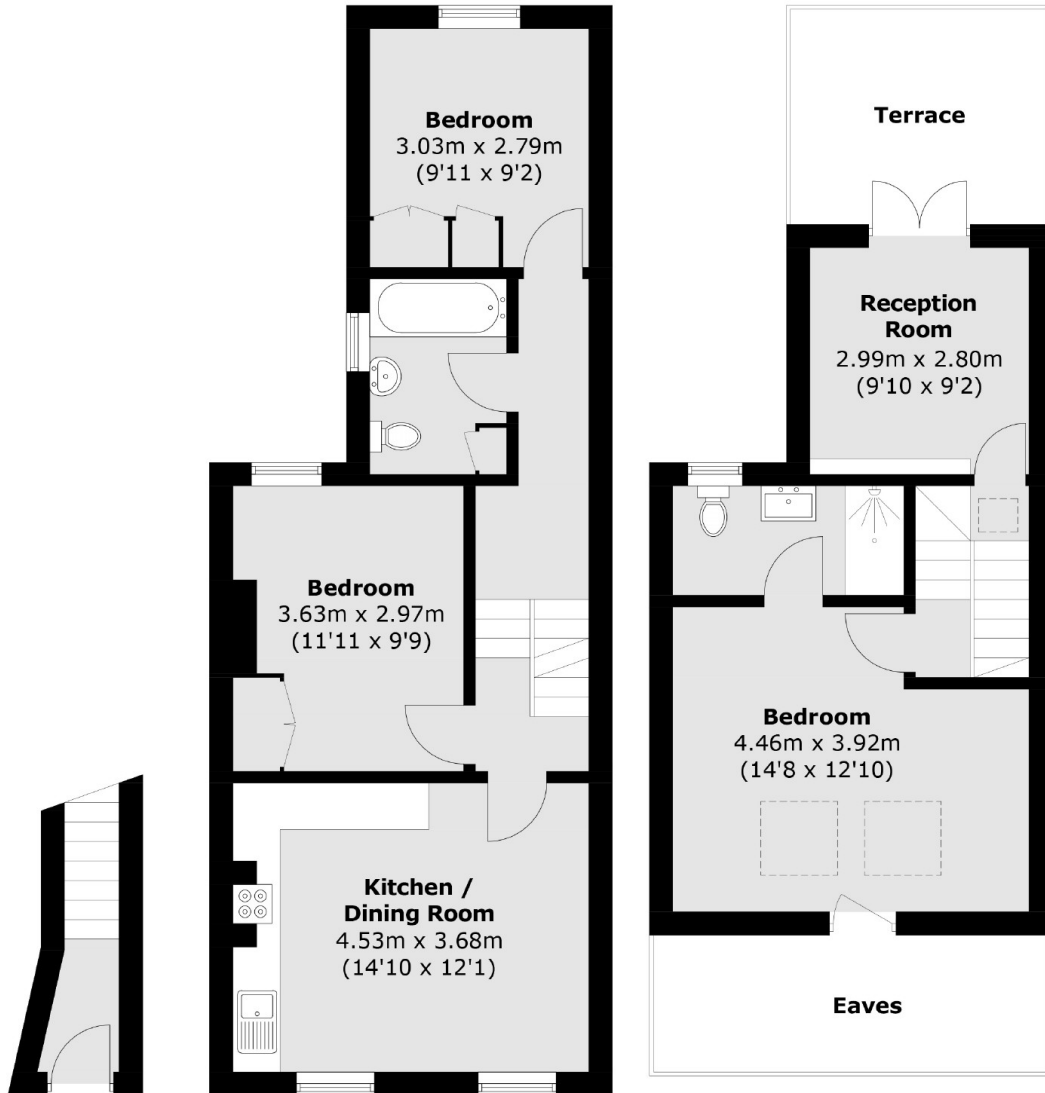
North Cross Road, SE22

With its contemporary layout, the accommodation can be arranged as four bedrooms with an open plan kitchen / reception should it be required or as a spacious three bedroom, two reception for those looking for more entertaining space, as the current sellers have demonstrated.

On the first floor there is a sleek modern kitchen and two bedrooms with fitted wardrobes served by a stylish bathroom/wc. The top floor offers a further double bedroom with ensuite shower room and a reception room leading out to a private terrace.



North Cross Road, London, SE22



Ground Floor

First Floor

Second Floor

Total area (approx.): 87.1 sq. m (937.5 sq. ft)
Terrace (approx.): 9.1 sq. m (97.9 sq. ft)
(Excluding Eaves)