



Overhill Road, SE22

£650,000

A very bright and spacious newly renovated Victorian conversion flat, situated on a quiet residential road in East Dulwich.

Overhill road is well located for transport links to central London. Nearby Forest Hill and East Dulwich stations, buses on Lordship Lane will also take you right into central London. Lordship Lane has a wealth of shops, bars and restaurants.

Features

- Huge Private Garden
- Off Street Parking
- Three Double Bedrooms
- Two Bathrooms
- Share Of Freehold
- Chain Free

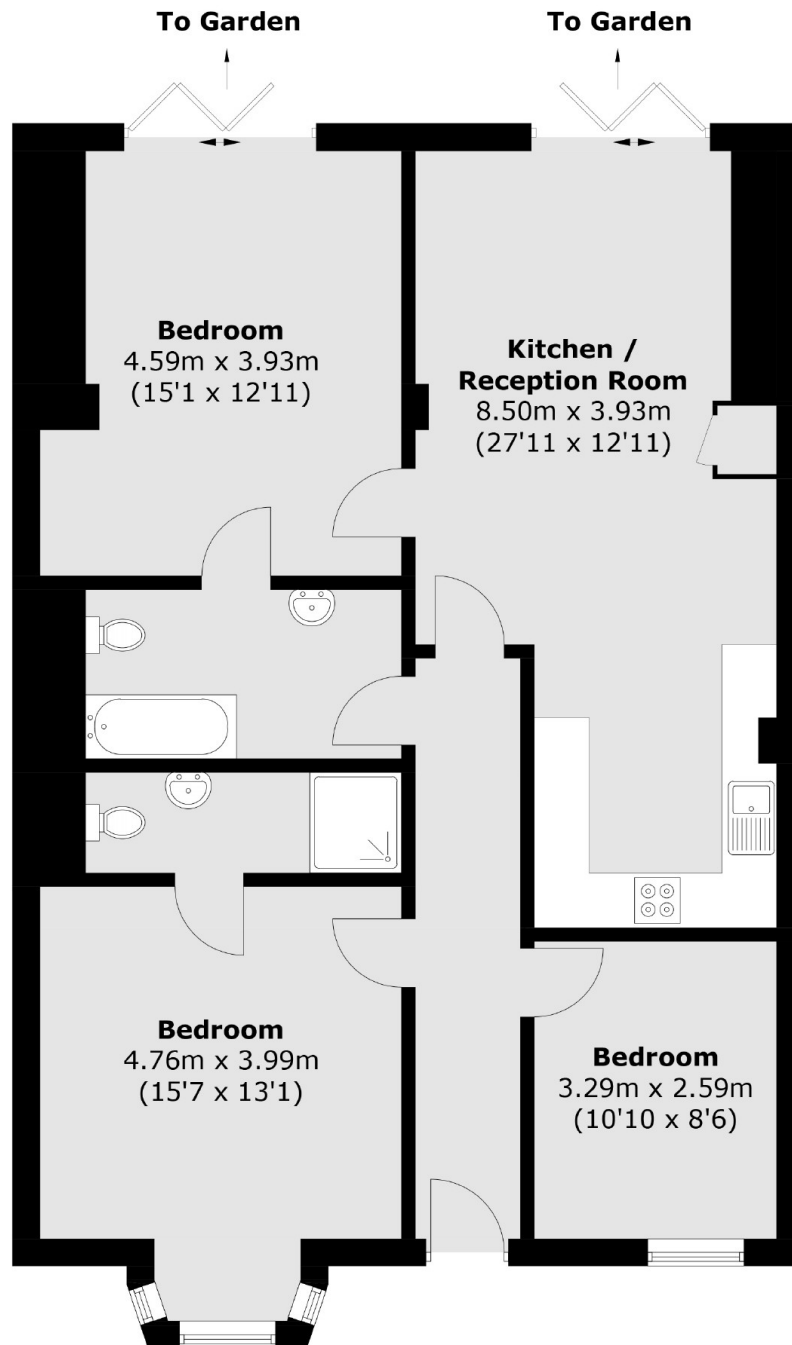


Overhill Road, SE22

An exceptionally large three bedroom Victorian conversion flat with a huge private garden and a wonderful view. The property has three double bedrooms two bathrooms, large reception room overlooking the garden and the added bonus of off street parking. The properties have been renovated to a high standard by the current owners and are offered to the market, chain free.



Overhill Road, London, SE22



Total area (approx.): 97.9 sq. m (1,053.8 sq. ft)

Dexters

East Dulwich
98 Grove Vale
London
SE22 8DR
Sales
020 8742 4142

Energy Rating: C. We aim to make our particulars both accurate and reliable. However they are not guaranteed; nor do they form part of an offer or contract. If you require clarification on any points then please contact us, especially if you're traveling some distance to view. Please note that appliances and heating systems have not been tested and therefore no warranties can be given as to their good working order.

 **RICS** | Regulated
Estate Agent
and Letting Agent

[dexters.co.uk](https://www.dexters.co.uk)