



Hindmans Road, SE22

£1,100,000

Sunny, wide and stylish, this beautiful Victorian house with wonderfully bright open-plan living and original features has been extended and renovated to provide a perfect turn-key home for a young family. It is situated in a prime, leafy location close to Peckham Rye Park.

The ground floor of this property has been substantially enlarged courtesy of a stylish side extension. This has two large skylights and full glass sliding doors to the garden. The resulting space is a huge and very sunny kitchen/family/dining room (measuring 28' x 16'), ideal for open-plan living, entertaining and young families. The kitchen has a cool contemporary style, central island and lovely Italian marbled flooring and underfloor heating. There is

Features

- Victorian Terrace
- Extend To Ground Floor
- Excellent Condition
- Three Bedrooms
- Stylish Bathroom
- Sought After Road



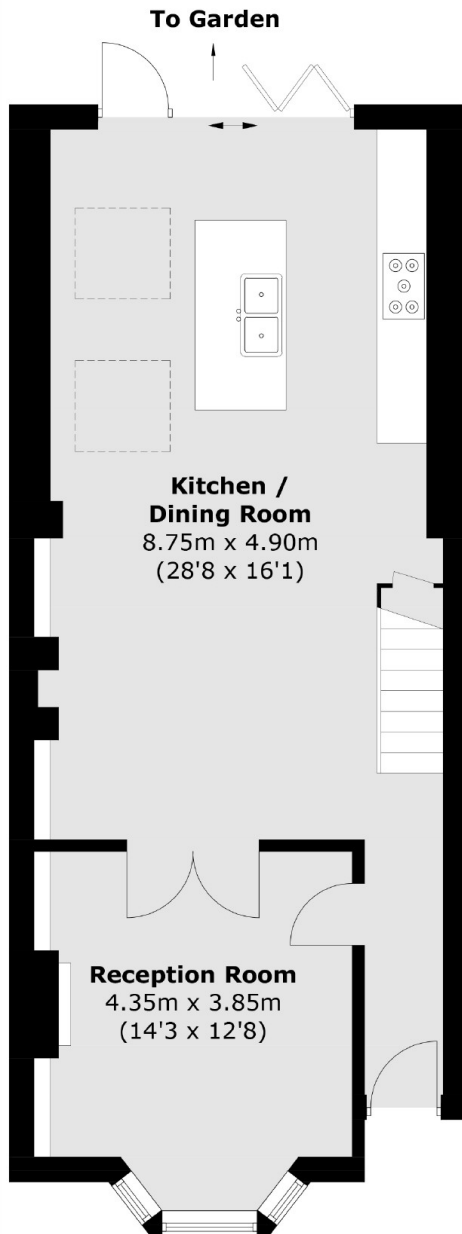
Hindmans Road, SE22

The ground floor of this property has been substantially enlarged courtesy of a stylish side extension. This has two large skylights and full glass sliding doors to the garden. The resulting space is a huge and very sunny kitchen/family/dining room (measuring 28' x 16'), ideal for open-plan living, entertaining and young families. The kitchen has a cool contemporary style, central island and lovely Italian marbled flooring and underfloor heating. There is still space on the ground floor for a beautiful front reception room with angle bay window, original doors, ceiling cornicing, plus a wood burner to create a cosy space in winter. The rear garden is fully paved and has a lovely private feel.

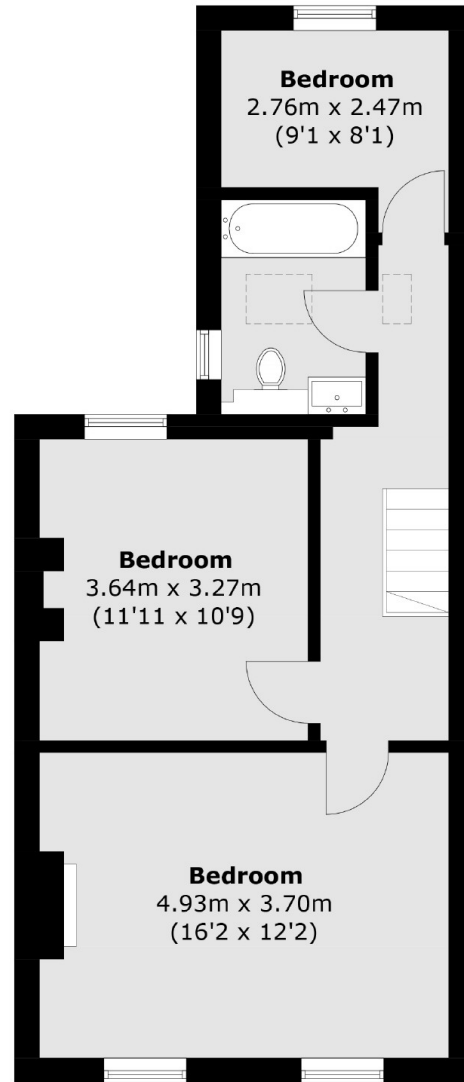
On the first floor are two double bedrooms and a large single all served by a smart family bathroom. There is ample precedent on the street and in the wider local area for conversion of the large loft. This could create either an additional large master bedroom plus en suite or two further bedrooms plus an extra bathroom, adding great square footage (and value) in the process. To that end, the current owners have already put a hot and cold water feed into the loft along with an electrical mains circuit ready to go.



Hindmans Road, London, SE22



Ground Floor



First Floor

Total area (approx.): 111.2 sq. m (1,196.9 sq. ft)