



## Sydenham Hill, SE26

£2,500 Per calendar month

A stunning three bedroom, two bathroom lower ground floor property.

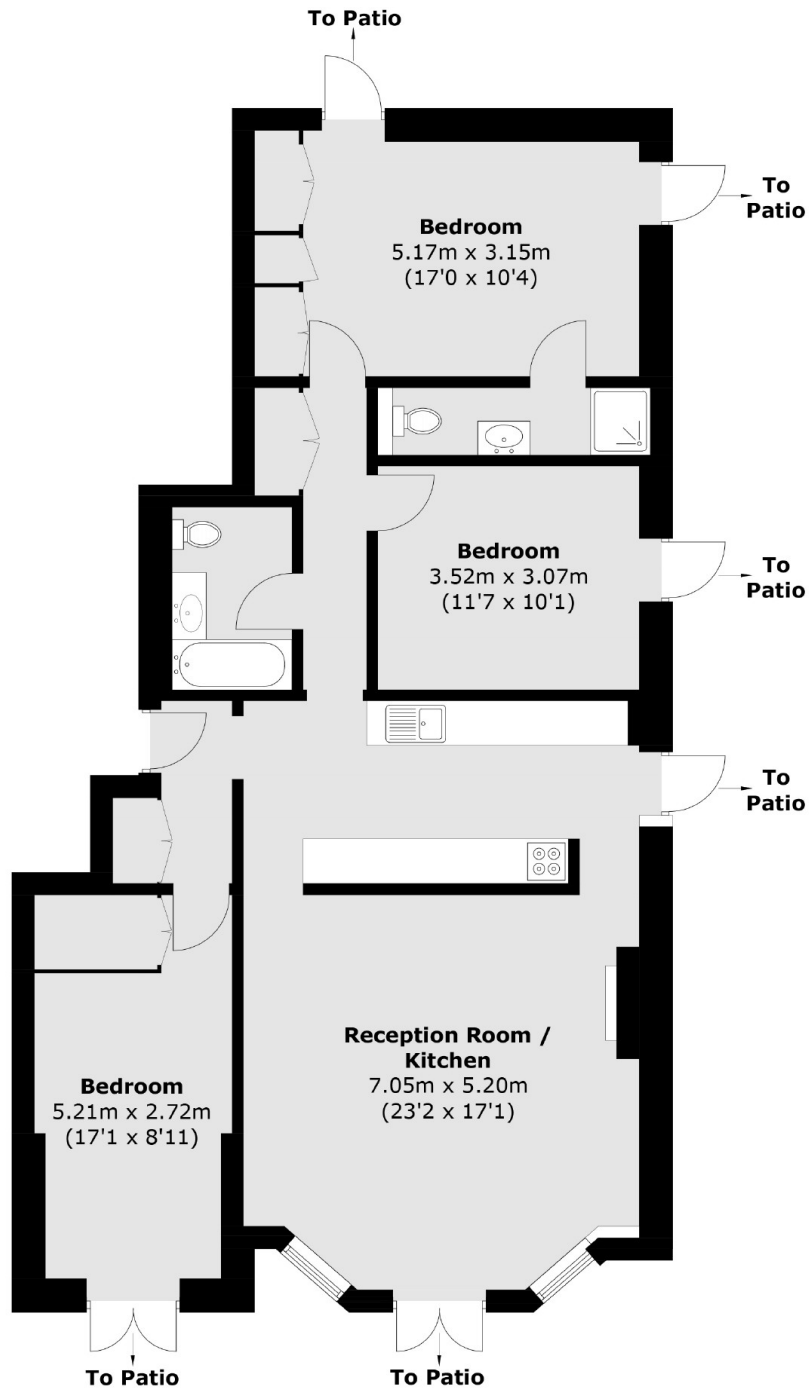
This spacious home benefits from having three good size double bedrooms and having ample amounts of built in storage space throughout, with an en-suite in the master bedroom, a high specification kitchen, a contemporary three piece bathroom suite, hard wood flooring, floor-to-ceiling windows in every room and wrap around outdoor space.

Located on a residential road in a well-connected neighbourhood, with plenty of amenities nearby. Crystal Palace park is only 2 minutes' walk away, it is a 10 minutes' walk to Sydenham Hill station, and 20 minutes' walk to Sydenham station and Crystal Palace station.

### Features

- Three Double Rooms
- Open Plan Kitchen/Reception Room
- Two Bathroom
- Modern Decor Throughout
- Private Garden
- Allocated Parking

Sydenham Hill,  
London, SE26



Total area (approx.): 101.2 sq. m (1,089.3 sq. ft)