



Norcroft Gardens, SE22

£550,000

A bright mid-terrace modern house which has been neutrally decorated throughout. Superbly located on a quiet no through road, it offers two bedrooms, bright rear reception and a pretty garden. Offered with no onward chain this would make an ideal first home.

This light and naturally bright house provides superb living space. The ground floor offers a separate kitchen and spacious reception room with full width glass sliding doors opening onto the lawned garden with paved patio. Whilst upstairs, there are two generous double bedrooms both with built in storage and served by a family bathroom/WC. Further storage is available in a useful brick built shed situated within the front garden.

Features

- Freehold House
- Good Decorative Order
- Two Double Bedrooms
- Well Kept Garden
- No Onward Chain
- Quiet Location

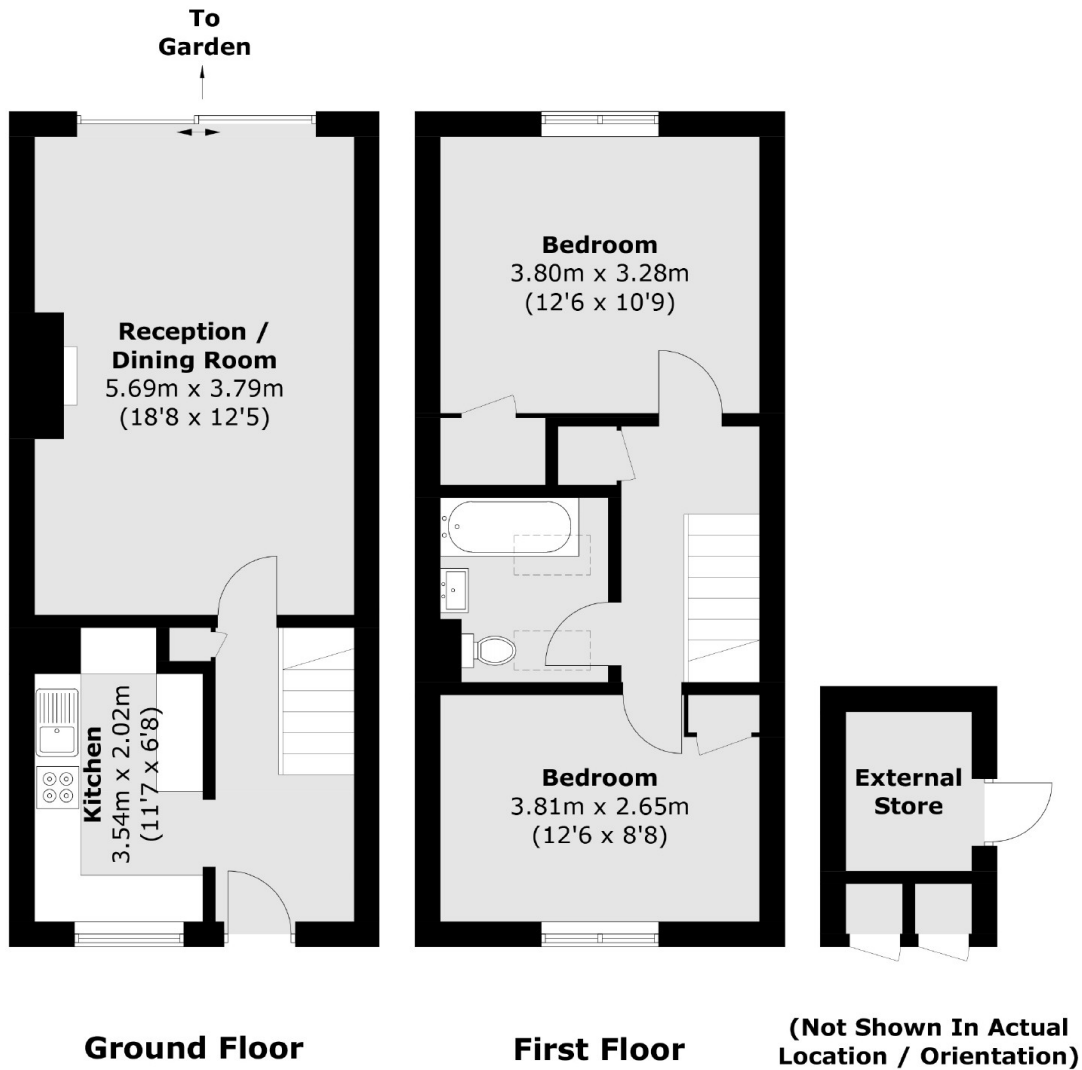


Norcroft Gardens, SE22

This light and naturally bright house provides superb living space. The ground floor offers a separate kitchen and spacious reception room with full width glass sliding doors opening onto the lawned garden with paved patio. Whilst upstairs, there are two generous double bedrooms both with built in storage and served by a family bathroom/WC. Further storage is available in a useful brick built shed situated within the front garden.



Norcroft Gardens, London, SE22



Total area (approx.): 71.6 sq. m (770.7 sq. ft)
External Store (approx.): 4.1 sq. m (44.1 sq. ft)