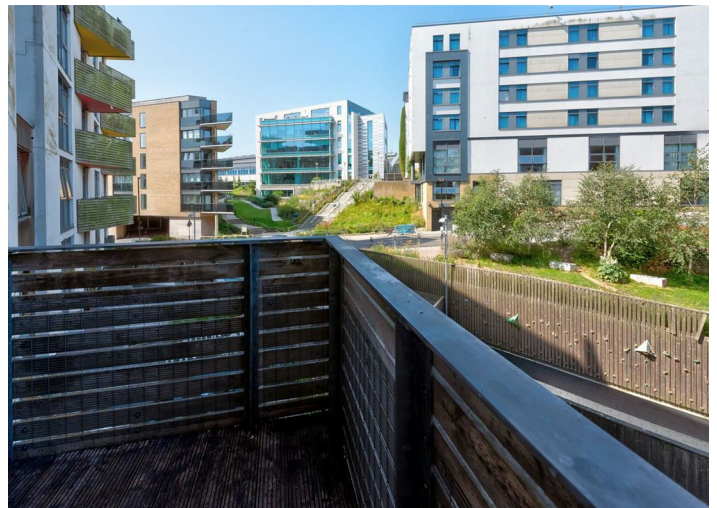


32 Brighton Belle
2 Stroudley Road
Brighton
BN1 4ZB



CALLAWAYS
RESIDENTIAL
SALES & LETTINGS



32 Brighton Belle

£1,800 PCM

Communal Entrance

The communal hall has a security door with video entry system leading to the entrance lobby with postal boxes. There are lifts and stairs to all floors and the communal roof terrace.

Open/plan living area

Triple glazed doors to Juliette balcony, wall lights. Tiled flooring to kitchen, range of wall and base level units, work surfaces with splash backs, one and a quarter bowl stainless steel sink and drainer with mixer tap. Electric oven with four ring hob, extractor hood, fridge/freezer.

BEDROOM ONE

Double bedroom, with triple glazed windows and a built in wardrobe

Bedroom Two

Double bedroom, with triple glazed windows and built in wardrobe

Bathroom

White panel bath with mixer tap and shower attachment, inset wash hand basin with mixer tap, low level WC, part tiled walls, tiled floor, ceiling spotlights and a heated towel rail.

Ensuite

En suite comprises of a shower, low level WC, vanity unit and hand basin, part tiled walls and a heated towel rail.

ADDITIONAL INFORMATION

EPC B

Tax band D

Unfurnished

Available April 2026

Students welcome

Heating and hot water included in the rent

1 weeks holding deposit required £415.38

Security Deposit £2076.92

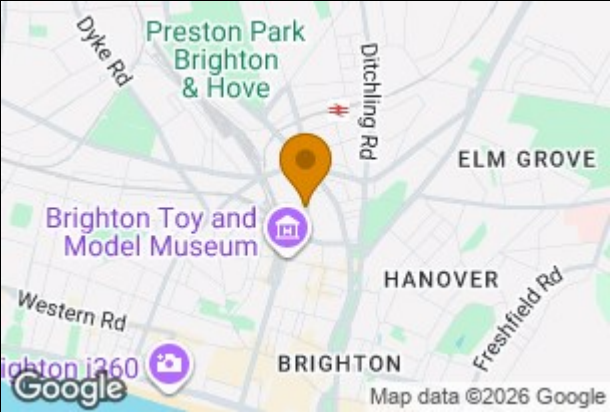
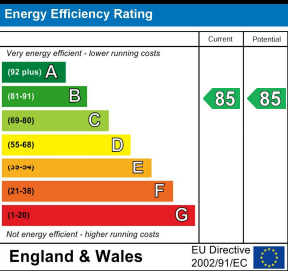
No Deposit Option Available

Head lease states no pets allowed

Local Authority
Brighton & Hove City Council

Council Tax Band
D

Directions



Agents Note: Whilst every care has been taken to prepare these particulars, they are for guidance purposes only. All measurements are approximate and are for general guidance purposes only and whilst every care has been taken to ensure their accuracy, they should not be relied upon and potential buyers/tenants are advised to recheck the measurements



Wilbury Residential Lettings

North & South Studios 3
Wilbury Grove
Hove

Contact

01273-735237

enquiries@callaways.co.uk

www.wilburyresidential.co.uk