



## Elder Road, SE27

£375,000

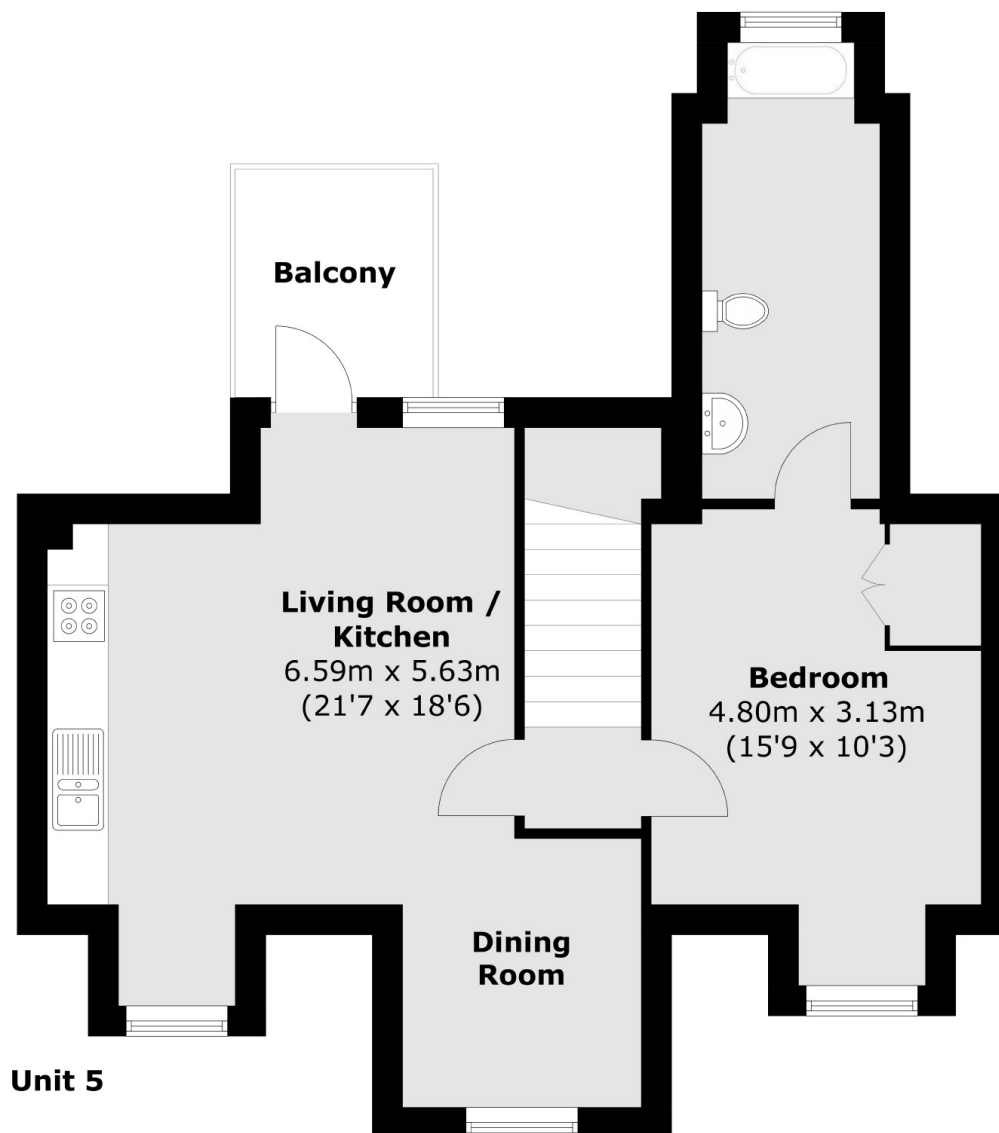
A one double-bedroom apartment, occupying the entire top floor of this Victorian period conversion. There is a southwest-facing roof terrace and a large open-plan kitchen/reception with separate dining space. All with a share of the freehold.

The Park Tavern is a beautiful Victorian pub establishment, having first opened its doors in 1867 and being situated directly opposite Norwood Park. Elder Road is a short walk away from West Norwood station offering connections to London Victoria and London Bridge. Shops and restaurants are all located on West Norwood High Street and Streatham Common is a great park to enjoy nearby.

### Features

- One Double Bedroom
- Victorian Period Conversion
- Large Lateral Space
- Small Bespoke Development
- Large Kitchen/Living Room & Separate Dining Space
- South-West Facing Terrace
- Share Of The Freehold

# Elder Road, West Norwood, SE27



## Second Floor

Total area (approx.)  
Unit 5 - 54.0 sq. m (581.2 sq. ft)