



## Southfields Road, SW18

### £1,100,000

\* EPC A Rated Home \* A three bedroom, three bathroom family home situated in a secure gated mews built by multi award winning developer Oppidan. Residents benefit from a private South-West facing garden, Bosch appliances and on-street parking.

\*\* 80% Now Sold - Final Home Remains! \*\*

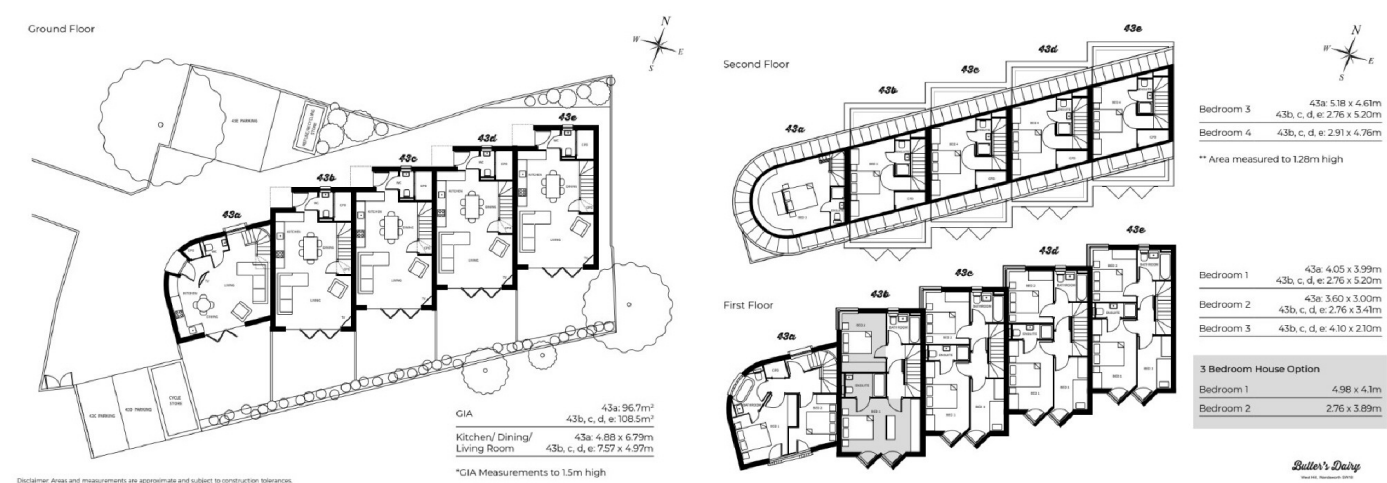
\*\*Please note - Whilst every effort has been made to accurately portray the development, CGI images have been used, alongside indicative floorplans produced from the planning documents.\*\*

Nestled within the heart of Wandsworth, there is a blend of urban convenience, quiet streets and green spaces. Butler's Dairy is very well connected with close transport links, a variety of shops, cafes, sporting centres and excellent schools.

### Features

- Secure Gated Mews
- Four or Three Bedrooms
- Three Bathrooms
- New Build Warranty
- Wet Underfloor Heating
- Bosch Appliances
- Southfields Station
- East Putney Station
- \*Parking Permit Eligible\*

# Southfields Road, Wandsworth, SW18



**Dexters**

Putney  
176 Putney High Street  
London  
SW15 1RS  
Sales  
020 8789 9999

Energy Rating: . We aim to make our particulars both accurate and reliable. However they are not guaranteed; nor do they form part of an offer or contract. If you require clarification on any points then please contact us, especially if you're traveling some distance to view. Please note that appliances and heating systems have not been tested and therefore no warranties can be given as to their good working order.

**RICS** Regulated  
Estate Agent  
and Letting Agent

dexters.co.uk