



Southfields Road, SW18

£1,100,000

*Limited parking spaces available to purchase' *

A four bedroom, three bathroom family home built by -multi award winning developer Oppidan. Residents benefit from a private garden, Bosch appliances and on-street parking*.

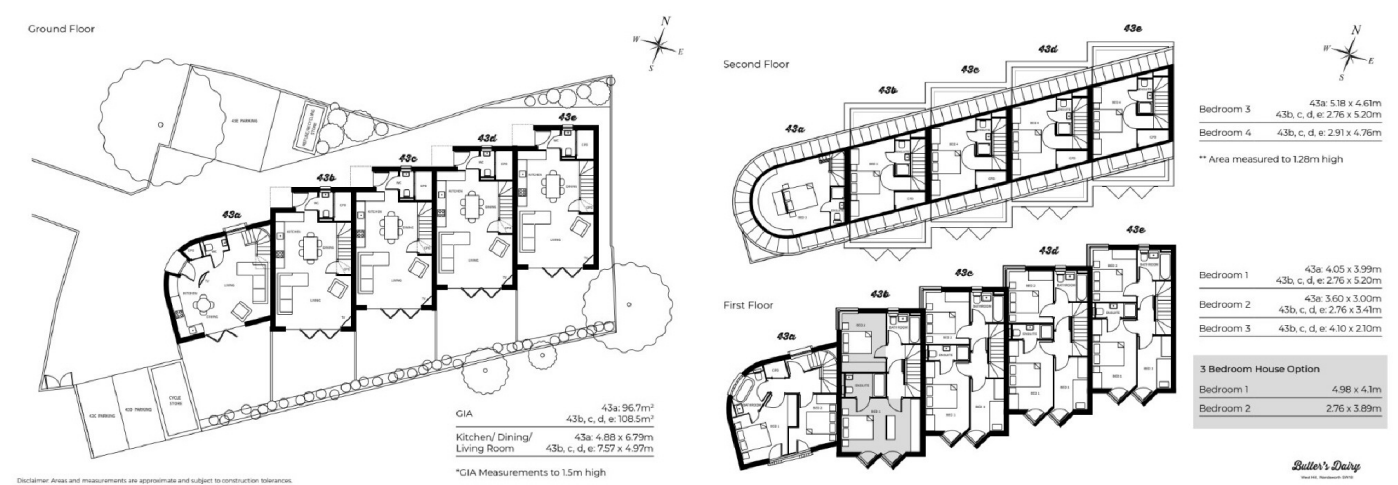
Please note - Whilst every effort has been made to accurately portray the development, CGI images have been used, alongside indicative floorplans produced from the planning documents.

Nestled within the heart of Wandsworth, there is a blend of urban convenience, quiet streets and green spaces. Butler's Dairy is very well connected with close transport links, a variety of shops, cafes, sporting centres and excellent schools.

Features

- Four Bedrooms
- Three Bathrooms
- New Build Warranty
- *Parking Permit Eligible*
- Wet Underfloor Heating
- Bosch Appliances
- Southfields Station
- East Putney Station

Southfields Road, London, SW18



Dexters

New Homes South London
12 The Broadway
London
SW19 1RF
Sales
020 8674 4555

Energy Rating: . We aim to make our particulars both accurate and reliable. However they are not guaranteed; nor do they form part of an offer or contract. If you require clarification on any points then please contact us, especially if you're traveling some distance to view. Please note that appliances and heating systems have not been tested and therefore no warranties can be given as to their good working order.

 **Regulated Estate Agent and Letting Agent**

dexters.co.uk