



The Broadway, SW19

£645,000

A two bedroom, maisonette apartment, on the ground and first floor with it's own private patio, and balcony. There is an incredible finish throughout, including engineered oak flooring, Bosch appliances and German kitchens as well as underfloor heating in the two bathrooms. There is a share of the freehold a 999 year lease.

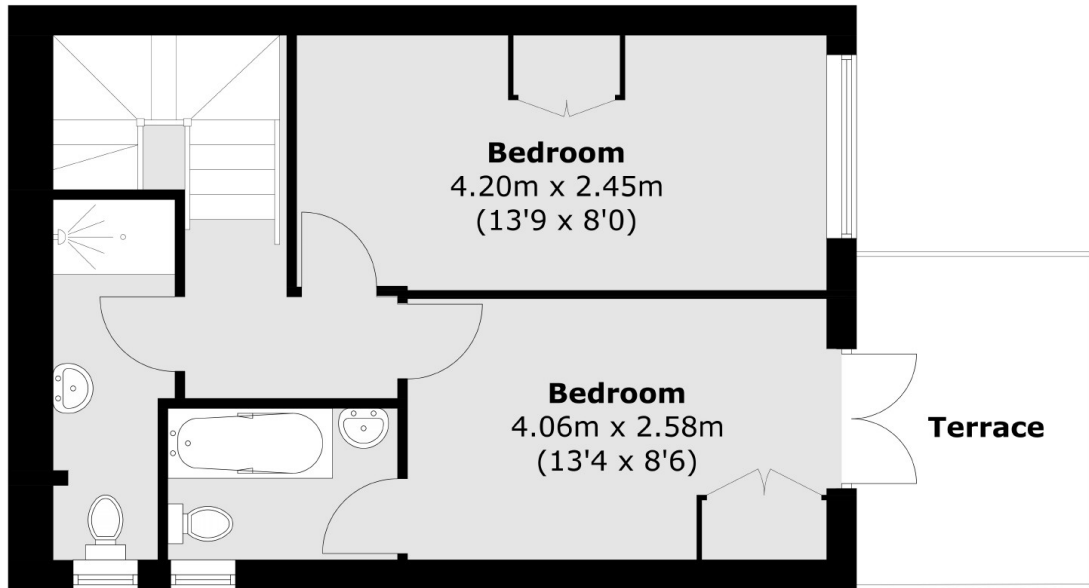
** Please note - Some photography from an apartment within the same development may have been used - The cupboards shown on the floorplan are to give an indication of the potential positioning **

Located conveniently for transport and leisure. Wimbledon station is within walking distance and provides easy access into Central London via the trains and the district line. There are a variety of amenities on your doorstep including the Polka Theatre, a variety of restaurants and shops.

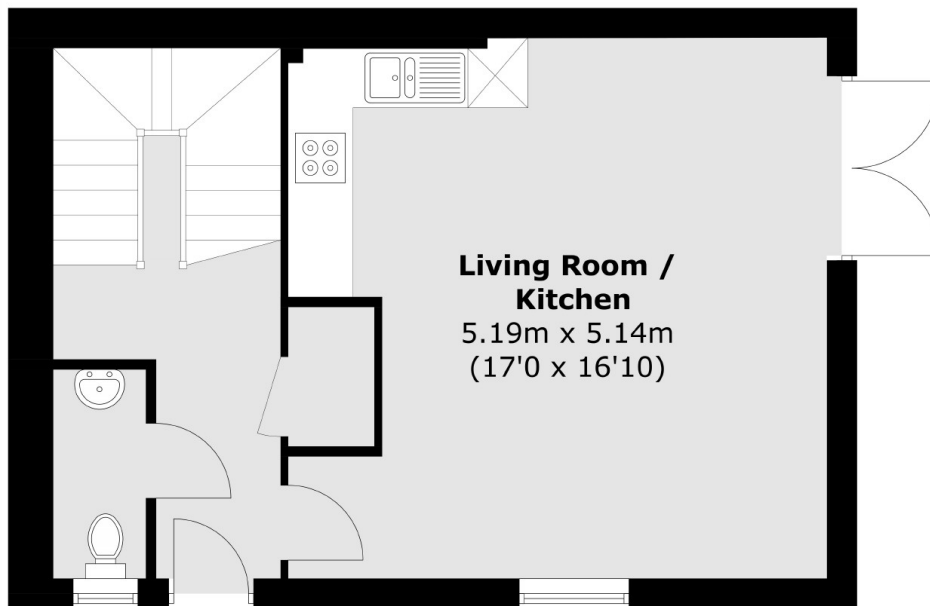
Features

- Two Bedrooms
- Two Bathrooms
- One Downstairs W.C
- Solar Panels
- Own Front Door
- Patio Garden & Balcony
- Share Of The Freehold

The Broadway, Wimbledon, SW19



First Floor



Ground Floor

Total area (approx.): 78.0 sq. m (839.6 sq. ft)
Terrace area (approx.): 7.7 sq. m (82.9 sq. ft)