



## Cavendish Grove, SW20

### £575,000

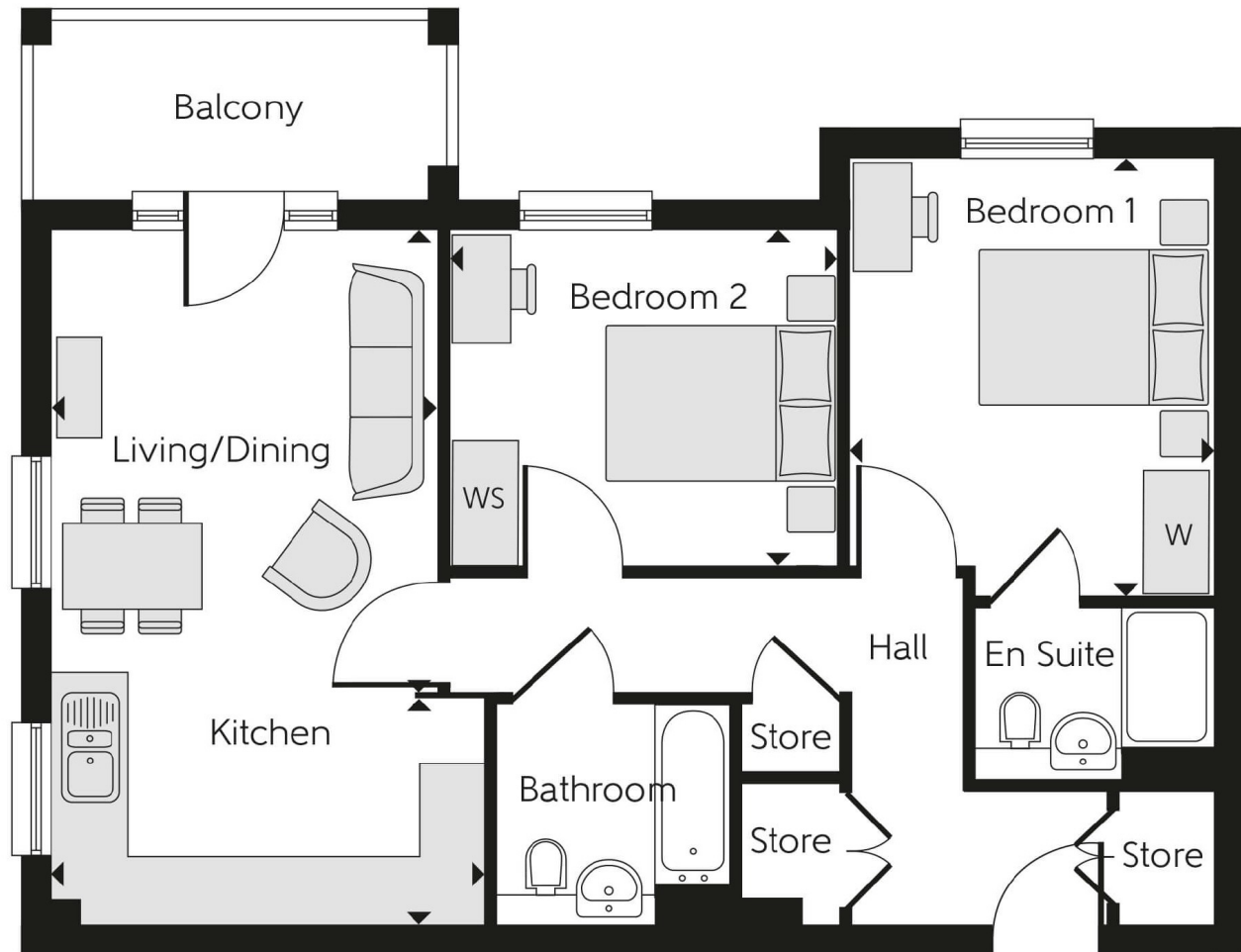
Cavendish Grove is a modern development of homes and apartments in Raynes Park, London. Offering a mix of 1- and 2-bedroom, plus 3- and 4-bedroom homes, this precisely planned community is sure to appeal to a range of potential homebuyers, including first-time buyers, families, young professionals, and London commuters.

At Bellway London we have always built attractive and desirable new homes. That's why we've become one of the five largest builders in Britain. But now there's even more reason to choose a Bellway London home.

### Features

- Brand new, chain free, energy efficient homes
- Excellent transport links into central London plus EV charger to all plots
- Completely modern throughout with selected integrated appliances included
- Open-plan kitchen, living, and dining room
- 10-year NHBC Buildmark polic

# Cavendish Grove, Raynes Park, SW20



## Dexters

New Homes South London  
12 The Broadway  
London  
SW19 1RF  
Sales  
020 8674 4555

Energy Rating: . We aim to make our particulars both accurate and reliable. However they are not guaranteed; nor do they form part of an offer or contract. If you require clarification on any points then please contact us, especially if you're traveling some distance to view. Please note that appliances and heating systems have not been tested and therefore no warranties can be given as to their good working order.

 **RICS** | Regulated  
Estate Agent  
and Letting Agent

[dexters.co.uk](https://www.dexters.co.uk)