



**Carnation Way, SW8**

**£7,866,000**

**Dexters**



## Carnation Way, SW8

A five-bedroom, four-bathroom apartment with River & City views. Occupying half of the entire forty first floor, this large lateral apartment has River & Canary Wharf Skyline views. Expanding to over 3,000 square feet.

A collection of one, two and three-bedroom apartments with incredible amenities and stunning views across London. Facilities include gymnasium, 30m swimming pool and spa, cinema room, business centre, kids' club, 24-hour concierge, video door entry/intercom to the concierge, on-site security with CCTV footage, and private residents' entrance lobby.

A collection of one, two and three-bedroom apartments with incredible amenities and stunning views across London. Facilities include gymnasium, 30m swimming pool and spa, cinema room, business centre, kids' club, 24-hour concierge, video door entry/intercom to the concierge, on-site security with CCTV footage, and private residents' entrance lobby.

Thames City is conveniently located for transport via Vauxhall Underground (Victoria Line) and Overground with the many facilities of Battersea Power Station right around the corner. Green open spaces are easily accessible at both Vauxhall & Battersea Park.

### Features

- Swimming Pool/Gym
- Five Bedrooms
- Four Bathroom
- Incredible Location - Nine Elms
- Close To Transport - Vauxhall
- Green Open Spaces Nearby





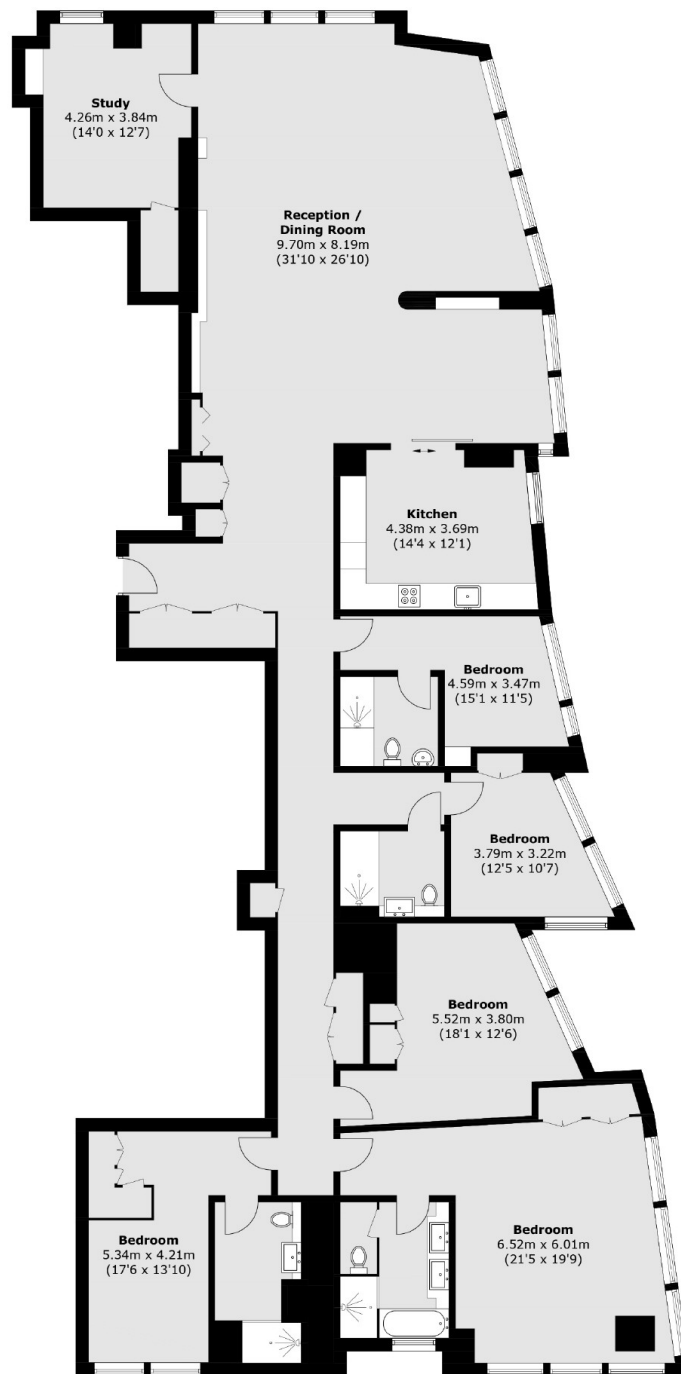








# Carnation Way, Vauxhall, SW8



**Forty Second Floor**

Total area (approx.): 274.9 sq. m (2,959.0 sq. ft)